

# TERT promoter mutations in thyroid cancer

Rengyun Liu and Mingzhao Xing

Laboratory for Cellular and Molecular Thyroid Research, Division of Endocrinology, Diabetes and Metabolism, The Johns Hopkins University School of Medicine, 1830 East Monument Street, Suite 333, Baltimore, Maryland 21287, USA

Correspondence should be addressed to M Xing  
**Email**  
mxing1@jhmi.edu

## Abstract

The 2013 discovery of Telomerase reverse transcriptase (*TERT*) promoter mutations chr5, 1,295,228 C>T (C228T) and 1,295,250 C>T (C250T) in thyroid cancer represents an important event in the thyroid cancer field and much progress has occurred since then. This article provides a comprehensive review of this exciting new thyroid cancer field. The oncogenic role of *TERT* promoter mutations involves their creation of consensus binding sites for E-twenty-six transcriptional factors. *TERT* C228T is far more common than *TERT* C250T and their collective prevalence is, on average, 0, 11.3, 17.1, 43.2 and 40.1% in benign thyroid tumors, papillary thyroid cancer (PTC), follicular thyroid cancer, poorly differentiated thyroid cancer and anaplastic thyroid cancer, respectively, displaying an association with aggressive types of thyroid cancer. *TERT* promoter mutations are associated with aggressive thyroid tumor characteristics, tumor recurrence and patient mortality as well as *BRAF* V600E mutation. Coexisting *BRAF* V600E and *TERT* promoter mutations have a robust synergistic impact on the aggressiveness of PTC, including a sharply increased tumor recurrence and patient mortality, while either mutation alone has a modest impact. Thus, *TERT* with promoter mutations represents a prominent new oncogene in thyroid cancer and the mutations are promising new diagnostic and prognostic genetic markers for thyroid cancer, which, in combination with *BRAF* V600E mutation or other genetic markers (e.g. *RAS* mutations), are proving to be clinically useful for the management of thyroid cancer. Future studies will specifically define such clinical utilities, elucidate the biological mechanisms and explore the potential as therapeutic targets of *TERT* promoter mutations in thyroid cancer.

## Key Words

- ▶ *TERT* promoter mutation
- ▶ thyroid cancer
- ▶ telomerase reverse transcriptase
- ▶ *BRAF* V600E mutation
- ▶ genetic molecular markers
- ▶ prognosis
- ▶ diagnosis

*Endocrine-Related Cancer*  
(2016) 23, R143–R155

## Introduction

### Telomerase reverse transcriptase in human cancer

Telomerase reverse transcriptase (*TERT*) is the catalytic protein subunit of telomerase, which, together with an integral RNA subunit and several species-specific assessor proteins, functions to add telomeres – tandem repeats of TTAGGG sequence – at the end of chromosomes (Moyzis *et al.* 1988), maintaining chromosomal integrity and genome stability (Greider & Blackburn 2004, Blasco 2005).

Telomerase is well expressed in germ line and stem cells but less expressed or repressed in most somatic human cells; in the latter, telomere loss occurs during each round of cell division, causing cells to enter senescence when a critical length of telomeres is reached (Harley & Villeponteau 1995, Blasco 2005). In contrast, telomerase is reactivated in many human cancers (Kim *et al.* 1994,

Shay & Bacchetti 1997), which prevents the happening of critical telomere shortening, thus enabling cancer cells acquire replicative immortality (Hanahan & Weinberg 2011). Compared with the RNA subunit, TERT plays a dominant role in the activation of telomerase during malignant transformation of cells (Feng *et al.* 1995, Meyerson *et al.* 1997, Bodnar *et al.* 1998, Hahn *et al.* 1999, Janknecht 2004). TERT can also modulate the expression of growth-controlling genes (Smith *et al.* 2003), directly regulate NF $\kappa$ B-dependent gene expression (Ghosh *et al.* 2012), and stabilize MYC levels on chromatin (Koh *et al.* 2015).

Given these and other functions of TERT, it has been proposed that TERT may act as an oncogene in a telomere-independent manner (Wyatt *et al.* 2010). In fact, over-expression of TERT, or naturally occurring alternatively spliced TERT variants that lack telomerase activities, stimulated rapid cell proliferation without changes of telomere length in human and murine cells (Smith *et al.* 2003, Sarin *et al.* 2005, Choi *et al.* 2008, Hrdlickova *et al.* 2012). Induced expression of TERT was also shown to promote the development of mammary carcinomas and epidermal tumors *in vivo* (Gonzalez-Suarez *et al.* 2001, Stewart *et al.* 2002). Inversely, TERT knockdown decreased cell proliferation and suppressed tumor growth in a xenograft model (Ghosh *et al.* 2012). Reactivation of TERT has also been linked to several other cancer hallmark behaviors, such as resistance to antigrowth signals, angiogenesis, resistance to apoptosis, invasion and metastasis, inflammation and immune surveillance, reprogramming of energy metabolism and genome instability (Low & Tergaonkar 2013).

Genome-wide association studies have identified multiple variants at the *TERT* locus that are associated with telomere length and risk of several cancers (Rafnar *et al.* 2009, Bojesen *et al.* 2013, Codd *et al.* 2013, Wang *et al.* 2014a), strongly suggesting that this locus is a common susceptibility locus for human cancer. The most significant advance in understanding the genetic role of TERT in human cancer was the landmark finding of mutations in the promoter of the *TERT* gene in melanoma early in 2013 through whole-genome sequencing (Horn *et al.* 2013, Huang *et al.* 2013), which were quickly found also in other human cancers, such as bladder cancer and glioblastoma (Killela *et al.* 2013, Liu *et al.* 2013a) as well as thyroid cancer (Liu *et al.* 2013b). There are two common recurrent *TERT* promoter mutations in human cancer that are located at two hotspots: chr5, 1,295,228 C>T (C228T) and 1,295,250 C>T (C250T), corresponding to the positions 124 and 146 bp respectively upstream of the

*TERT* translation start site. These two *TERT* promoter mutations occurred in a mutually exclusive manner, with C228T being far more dominant than C250T in most cancers. Both mutations generate a consensus binding site in the *TERT* promoter for E-twenty-six (ETS) transcription factors, which has been shown to confer the *TERT* promoter increased transcriptional activities (Horn *et al.* 2013, Huang *et al.* 2013, Bell *et al.* 2015). This provides a mechanistic explanation for the oncogenic role of *TERT* promoter mutations in human cancer.

### Thyroid cancer

Thyroid cancer is the most common endocrine malignancy, which has seen a rapidly rising incidence in recent decades (Siegel *et al.* 2014, Howlader *et al.* 2015). Thyroid cancer is histologically classified into follicular thyroid cell-derived papillary thyroid cancer (PTC), follicular thyroid cancer (FTC), poorly differentiated thyroid cancer (PDTC) and anaplastic thyroid cancer (ATC), and parafollicular C cell-derived medullary thyroid cancer (MTC), which classically account for ~80, 10, 5, 2 and 3% of all thyroid malignancies, respectively (Hundahl *et al.* 1998), with PTC emerging to be even more dominant in recent years (Howlader *et al.* 2015). PTC can be further classified into several histological variants, the most common of which are conventional PTC (CPTC), follicular variant PTC (FVPTC) and tall-cell PTC (TCPTC). Among follicular cell-derived thyroid cancers, PTC and FTC are differentiated thyroid cancer with a generally indolent disease course while ATC, albeit uncommon, is an undifferentiated thyroid cancer with a rapid aggressive disease course; PDTC has an intermediate aggressive course between DTC and ATC. There is also thyroid Hürthle cell cancer (HCC), which is uncommon and conventionally treated as a type of FTC. Since our first report of *TERT* promoter mutations in various types of thyroid cancer in 2013 (Liu *et al.* 2013b), there have been a large number of more studies on this topic published, reporting and characterizing *TERT* promoter mutations in thyroid cancer (Landa *et al.* 2013, Vinagre *et al.* 2013, Cancer Genome Atlas Research Network 2014, Liu & Xing 2014, Liu *et al.* 2014a,b, Melo *et al.* 2014, Wang *et al.* 2014b,c, Xing *et al.* 2014a, de Biase *et al.* 2015, Chindris *et al.* 2015, Crescenzi *et al.* 2015, Dettmer *et al.* 2015, Gandolfi *et al.* 2015, Lee *et al.* 2015, Muzza *et al.* 2015, Qasem *et al.* 2015, Shi *et al.* 2015). This is an exciting new thyroid cancer research field, which has progressed rapidly just in this past 2 years; much has now already been known about the biological role and clinical significance of *TERT* promoter

mutations in thyroid cancer. This review focuses on *TERT* promoter mutations in thyroid cancer and summarizes the progresses in recent research and clinical development of this young but rapidly mushrooming field. We included all the studies on *TERT* promoter mutations in thyroid cancer published in English in PubMed as of November 2015 with identifiable information on thyroid tumor types. The pooled analyses included nonselective cases from different studies available for the analyzed parameters as presented in the corresponding tables and figures and did not include four studies which were each focused on highly selective special cases, including pediatric thyroid cancer (Ballester *et al.* 2015), papillary thyroid microcarcinomas (PTMC) (de Biase *et al.* 2015), tall-cell PTC (Dettmer *et al.* 2015) and distant-metastasis PTC (Gandolfi *et al.* 2015).

### Common occurrence of *TERT* promoter mutations in thyroid cancer

The most common *TERT* promoter mutations are C228T and C250T in human cancers. As initially demonstrated (Liu *et al.* 2013b), studies have generally shown no overlap between *TERT* C228T and C250T mutations and the former is far more prevalent than the latter in thyroid cancer. This pattern is uniformly seen regardless of the ethnic and geographical backgrounds of the studies (Table 1). Specifically, on the overall analysis, the prevalences of C228T and C250T are 9.7 and 2.1% in PTC, 15.7 and 2.5% in FTC, 33.8 and 15.0% in PDTC, 37.7 and 4.1% in ATC respectively. The relative distribution of *TERT* C228T between the two mutations is dominantly 82.5, 86.2, 69.2 and 90.2% in PTC, FTC, PDTC and ATC respectively. The mutual exclusivity of the two *TERT* promoter mutations suggests that either may function sufficiently to play an important role in thyroid tumorigenesis although which one is more powerful oncogenically has not been established at this time. Unless otherwise specified, the analyses and discussions in this review will be on the two *TERT* promoter mutations collectively.

Our initial study reported a prevalence of *TERT* C228T and C250T mutations to be collectively 0% in benign thyroid tumors, 38–46% in PDTC and ATC, and 12–14% in PTC and FTC (Liu *et al.* 2013b). This pattern of prevalence was confirmed in many other studies as summarized in Table 2. Specifically, on the analysis of the pooled data, the two *TERT* promoter mutations were found collectively in 11.3, 17.1, 14.6, 43.2 and 40.1% of PTC, FTC, HCC, PDTC and ATC respectively. No *TERT* promoter mutation was

**Table 1** Distribution of the two common *TERT* promoter mutations – C228T and C250T – in thyroid cancer

Study No.	PTC		FTC		PDTC		ATC		Reference
	C228T	C250T	C228T	C250T	C228T	C250T	C228T	C250T	
1	30/257 (11.7)	0/257 (0)	9/79 (11.4)	2/79 (2.5)	3/8 (37.5)	0/8 (0)	10/20 (50.0)	0/20 (0.0)	Liu <i>et al.</i> (2013b)
2	10/80 (12.5)	8/80 (10.0)	8/52 (15.4)	1/52 (1.9)	18/58 (31.0)	12/58 (20.7)	8/20 (40.0)	2/20 (10.0)	Landa <i>et al.</i> (2013)
3	12/51 (23.5)	1/51 (2.0)	7/22 (31.8)	1/22 (4.6)	6/14 (42.9)	0/14 (0)	37/106 (34.9)	4/106 (3.8)	Wang <i>et al.</i> (2014b)
4	39/408 (9.6)	7/408 (1.7)	1/5 (20.0)	0/5 (0)	27/80 (33.8)	12/80 (15.0)	55/146 (37.7)	6/146 (4.1)	Liu <i>et al.</i> (2014a)
5	27/384 (7.0)	8/384 (2.1)	0/1 (0)	0/1 (0)	27/39 (69.2)	12/39 (30.8)	55/61 (90.2)	6/61 (9.8)	Liu <i>et al.</i> (2014b)
6	20/243 (8.2)	6/243 (2.5)	25/159 (15.7)	4/159 (2.5)	27/80 (33.8)	12/80 (15.0)	55/146 (37.7)	6/146 (4.1)	TCGA (2014)
7	3/30 (10.0)	0/30 (0)	25/29 (86.2)	4/29 (13.8)	27/39 (69.2)	12/39 (30.8)	55/61 (90.2)	6/61 (9.8)	Qasem <i>et al.</i> (2015)
8	141/1453 (9.7)	30/1453 (2.1)	25/159 (15.7)	4/159 (2.5)	27/80 (33.8)	12/80 (15.0)	55/146 (37.7)	6/146 (4.1)	Crescenzi <i>et al.</i> (2015)
9	141/171 (82.5)	30/171 (17.5)	25/29 (86.2)	4/29 (13.8)	27/39 (69.2)	12/39 (30.8)	55/61 (90.2)	6/61 (9.8)	Shi <i>et al.</i> (2015)
Overall (1)									
Overall (2)									

Overall (1): *n*/total cases; Overall (2): *n*/*TERT* mutant cases. The 80 cases of PTC in Study No. 2 consisted of 29 cases from Memorial Sloan-Kettering Cancer Center (MSKCC) and 51 cases from Nagasaki University in Japan. The 384 cases of PTC from the Cancer Genome Atlas (TCGA) Research Network (Study No. 6) contained 47 cases from Johns Hopkins University and 75 cases from MSKCC, which could partially overlap with Study Nos 1 and 2 respectively. Therefore, 47 + 29 = 76 out of 1453 cases of PTC or 5.2%, at most, could potentially overlap in the overall analysis for PTC at the bottom of the table. Data used here are from those studies that provided available information specifically on the occurrence of both C228T and C250T. PTC, papillary thyroid cancer; FTC, follicular thyroid cancer; PDTC, poorly differentiated thyroid cancer; ATC, anaplastic thyroid cancer.

found in MTC. Of the total of 363 benign thyroid neoplasms from various studies, only one sample was reported to harbor *TERT* promoter mutation (C228T). It should be noted, though, that this case of patient with *TERT* promoter mutation-positive benign thyroid neoplasm later developed tumor recurrence and died of FTC, raising question on the histological nature of the benign tumor (Wang *et al.* 2014b). Thus, the prevalence of *TERT* promoter mutations in the large number of true benign thyroid neoplasms is 0%.

*TERT* promoter mutation is a rare genetic event in PTMC as demonstrated in the study of de Biase *et al.* (2015) which examined the *TERT* promoter mutation status in 431 PTMC and found a prevalence of 4.7%; this prevalence is much lower than that seen on the analyses of thyroid cancers of all tumor sizes (Table 2). *TERT* promoter mutation appears to also be uncommon in pediatric thyroid cancers as suggested by the study of Ballester *et al.* (2015), which found no *TERT* promoter mutation in 27 pediatric thyroid cancers, including 25 PTC, 1 FTC and 1 MTC. Larger studies on pediatric thyroid cancer, however, are needed to confirm this finding. Our initial study (Liu *et al.* 2013b) demonstrated a prevalence

distribution of *TERT* promoter mutations among the three main variants of PTC in the order of TCPTC >>> CPTC > FVPTC. Several subsequent studies have analyzed the distribution pattern of *TERT* promoter mutations in PTC variants and generally found the prevalence to be similarly highest in TCPTC and lowest in FVPTC. Specifically, as summarized in Table 3, the prevalence of *TERT* promoter mutations is 25.0% in TCPTC, 9.6% in CPTC and 8.0% in FVPTC. Lee *et al.* (2015) did not find *TERT* promoter mutation in ten cases of hobnail-variant PTC analyzed.

The presence of *TERT* promoter mutations provides a genetic mechanisms for the upregulation of *TERT* in thyroid cancer since these mutations create binding consensus sites in the *TERT* promoter for ETS transcriptional factors (Horn *et al.* 2013, Huang *et al.* 2013, Bell *et al.* 2015), which upregulate genes, including the *TERT* gene. In fact, two studies directly demonstrated an association of *TERT* promoter mutations with increased *TERT* expression in thyroid cancers (Vinagre *et al.* 2013, Muzza *et al.* 2015). This seems to be consistent with the previous findings that telomerase activity and *TERT* expression were undetectable in normal thyroid tissues

**Table 2** Frequency of *TERT* promoter mutations in various thyroid tumors

Study No.	Frequency (mutation/total (%))						Benign neoplasm	Reference
	PTC	FTC	HCC	PDTC	ATC	MTC		
1	30/257 (11.7)	11/79 (13.9)		3/8 (37.5)	25/54 (46.3)	0/16 (0)	0/85 (0)	Liu <i>et al.</i> (2013b)
2	18/80 (22.5)		4/25 (16.0)	30/58 (51.7)	10/20 (50.0)			Landa <i>et al.</i> (2013)
3	13/169 (7.7)	9/64 (14.1)		3/14 (21.4)	2/16 (12.5)	0/28 (0)	0/72 (0)	Vinagre <i>et al.</i> (2013)
4	5/111 (4.5)	4/18 (22.2)					0/166 (0)	Liu & Xing (2014)
5		9/52 (17.3)					1/58 (1.7)	Wang <i>et al.</i> (2014b)
6						0/39 (0)		Wang <i>et al.</i> (2014c)
7	13/51 (25.5)	8/36 (22.2)			10/20 (50%)	0/37 (0)		Liu <i>et al.</i> (2014a)
8	46/408 (11.3)	8/22 (36.4)					0/44 (0)	Liu <i>et al.</i> (2014b)
9	25/332 (7.5)	12/70 (17.1)		9/31 (29.0%)	12/36 (33.3%)	0/28 (0)	0/72 (0)	Melo <i>et al.</i> (2014)
10	61/507 (12.0)							Xing <i>et al.</i> (2014a)
11	36/384 (9.4)							TCGA (2014)
12	26/243 (10.7)	1/5 (20.0)	1/3 (33.3)	6/14 (42.9)				Qasem <i>et al.</i> (2015)
13	3/30 (10.0)	0/1 (0)					0/17 (0)	Crescenzi <i>et al.</i> (2015)
14			8/61 (13.1)					Chindris <i>et al.</i> (2015)
15					41/106 (38.7)			Shi <i>et al.</i> (2015)
16	22/182 (12.1)	8/58 (13.8)				0/14 (0)	0/6 (0)	Muzza <i>et al.</i> (2015)
Overall	250/2217 (11.3)	49/287 (17.1)	13/ 89 (14.6)	48/111 (43.2)	73/182 (40.1)	0/97 (0)	1/363 (0.3)	

Study Nos 1, 4 and 10 were from one group of the same investigators; Study Nos 3 and 9 were from another group of the same investigators; and Study Nos 5, 6 and 7 were from still another group of the same investigators. To avoid overlap, only the cases from the largest study from each of the three groups of investigators are included for the overall analyses at the bottom of the table. For the reason explained in the footnotes of Table 1, 76/2,217 or 3.4%, at most, could potentially overlap on the overall analysis for PTC at the bottom of the table. The one case of patient with *TERT* promoter mutation-positive benign thyroid neoplasm later developed tumor recurrence and died of FTC, raising question on the histological nature of the benign tumor (Wang *et al.* 2014b). Thus, the prevalence of *TERT* promoter mutations in the large number of remaining true benign thyroid neoplasms is 0%. PTC, papillary thyroid cancer; FTC, follicular thyroid cancer; HCC, thyroid Hürthle cell cancer; PDTC, poorly differentiated thyroid cancer; ATC, anaplastic thyroid cancer; MTC, medullary thyroid cancer.

**Table 3** TERT promoter mutations in three main variants of papillary thyroid cancer

Study No.	Frequency (mutation/total (%))			Reference
	CPTC	FVPTC	TCPTC	
1	23/187 (12.3)	2/56 (3.6)	4/13 (30.8)	Liu <i>et al.</i> (2013b)
2	12/110 (10.9)	0/39 (0)		Vinagre <i>et al.</i> (2013)
3	19/230 (8.3)	5/74 (6.8)	0/2 (0)	Melo <i>et al.</i> (2014)
4	47/383 (12.3)	8/103 (7.8)	5/19 (26.3)	Xing <i>et al.</i> (2014a)
5	25/270 (9.3)	5/81 (6.2)	6/29 (20.7)	TCGA (2014)
6	10/153 (6.5)	7/56 (12.5)	9/30 (30)	Qasem <i>et al.</i> (2015)
7	12/143 (8.4)			Muzza <i>et al.</i> (2015)
Overall	113/1179 (9.6)	25/314 (8.0)	20/80 (25.0)	

Study Nos 1 and 4 were from a group of the same investigators. Study Nos 2 and 3 were from another group of the same investigators. To avoid overlap, only the cases from the largest study of each group are included in the overall analysis at the bottom of the table. For the reason explained in Tables 1 and 2, overall, 47/1,573, or 3.0%, at most, has a potential overlap with the TCGA data. CPTC, conventional papillary thyroid cancer; TCPTC, tall-cell papillary thyroid cancer; FVPTC, follicular-variant papillary thyroid cancer.

and infrequently detectable in benign thyroid tumors, but TERT reactivation was frequently observed in thyroid cancers (Umbricht *et al.* 1997, Saji *et al.* 1999, Asaad *et al.* 2006). Compared with PTC and FTC, high TERT expression was more commonly observed in ATC (Ito *et al.* 2005), which is consistent with the distribution patterns of TERT promoter mutations among these thyroid cancers (Tables 1 and 2). Interestingly, knock-down of TERT using the antisense approach in human thyroid cancer cells inhibited telomerase activity *in vitro* and diminished tumor growth *in vivo* (Teng *et al.* 2003), providing the functional evidence for an oncogenic role of TERT in thyroid tumorigenesis. These data are all consistent with and support an important role of the TERT promoter mutations in thyroid tumorigenesis.

### Association of TERT promoter mutations with clinicopathological outcomes of thyroid cancer

A striking feature of TERT promoter mutations in thyroid cancer is their association with poor clinicopathological outcomes of the tumor, which has been consistently observed in different studies. The relationship between TERT promoter mutations and various clinicopathological parameters of thyroid cancer is summarized in Table 4. All the studies, except one on ATC (Liu *et al.* 2014a), consistently demonstrated a significant association between TERT promoter mutations and older patient age. On the pooled analysis, the patient age is  $59.2 \pm 15.5$  vs  $44.9 \pm 15.6$  years in TERT mutation-positive vs mutation-negative patients ( $P < 0.001$ ). Interestingly,

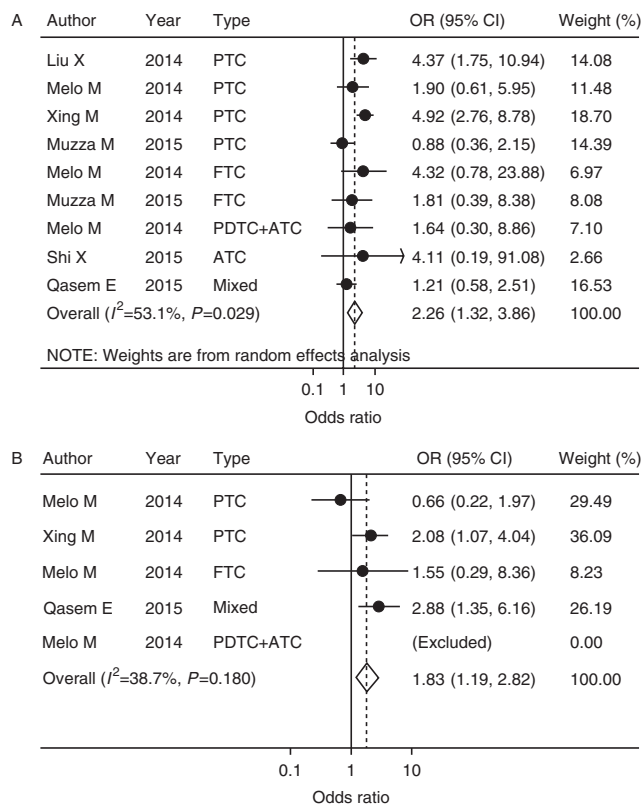
**Table 4** Summary of association between TERT promoter mutations and clinicopathological outcomes of thyroid cancer

Clinicopathological outcomes	All types of thyroid cancer			Papillary thyroid cancer		
	TERT WT	TERT mutant	P	TERT WT	TERT mutant	P
Age (n, mean $\pm$ s.d.) <sup>a</sup>	2110, 44.9 $\pm$ 15.6	327, 59.2 $\pm$ 15.5	<0.001	1781, 43.4 $\pm$ 14.8	212, 55.7 $\pm$ 15.7	<0.001
Gender (male/total, %) <sup>b</sup>	580/2335 (24.8)	132/353 (37.4)	<0.001	408/1786 (22.8)	80/212 (37.7)	<0.001
Tumor size (cm) (n, mean $\pm$ s.d.) <sup>a</sup>	1666, 2.69 $\pm$ 1.93	263, 3.93 $\pm$ 2.68	<0.001	1389, 2.30 $\pm$ 1.52	161, 2.92 $\pm$ 1.97	<0.001
Multifocality (pos/total, %) <sup>b</sup>	364/872 (41.7)	43/123 (35.0)	0.152	332/770 (43.1)	36/97 (37.1)	0.260
Extrathyroidal invasion (pos/total, %) <sup>b</sup>	516/1430 (36.1)	119/214 (55.6)	<0.001	405/1226 (33.0)	66/146 (45.2)	0.003
Vascular invasion (pos/total, %) <sup>b</sup>	265/933 (28.4)	49/116 (42.2)	0.002	200/831 (24.1)	26/86 (30.2)	0.207
Lymph node metastasis (pos/total, %) <sup>b</sup>	531/1210 (43.9)	91/178 (51.1)	0.070	469/1079 (43.5)	63/120 (52.5)	0.059
Distant metastasis (pos/total, %) <sup>b</sup>	109/1037 (10.5)	64/193 (33.2)	<0.001	61/872 (7.0)	25/108 (23.1)	<0.001
Stage (III + IV) (pos/total, %) <sup>b</sup>	434/1687 (25.7)	128/218 (58.7)	<0.001	358/1523 (23.5)	88/172 (51.2)	<0.001
Tumor recurrence (pos/total, %) <sup>b</sup>	179/956 (18.7)	75/144 (52.1)	<0.001	142/817 (17.4)	50/111 (45.0)	<0.001
Death (pos/total, %) <sup>b</sup>	23/413 (5.6)	26/62 (41.9)	<0.001	6/303 (2.0)	9/32 (28.1)	<0.001

Case overlap among the data from different studies is avoided in the analyses in this table except for the potential overlap of a small number of cases of PTC from the TCGA database as explained in Tables 1, 2 and 3

<sup>a</sup>Comparisons were performed using independent *t*-test.

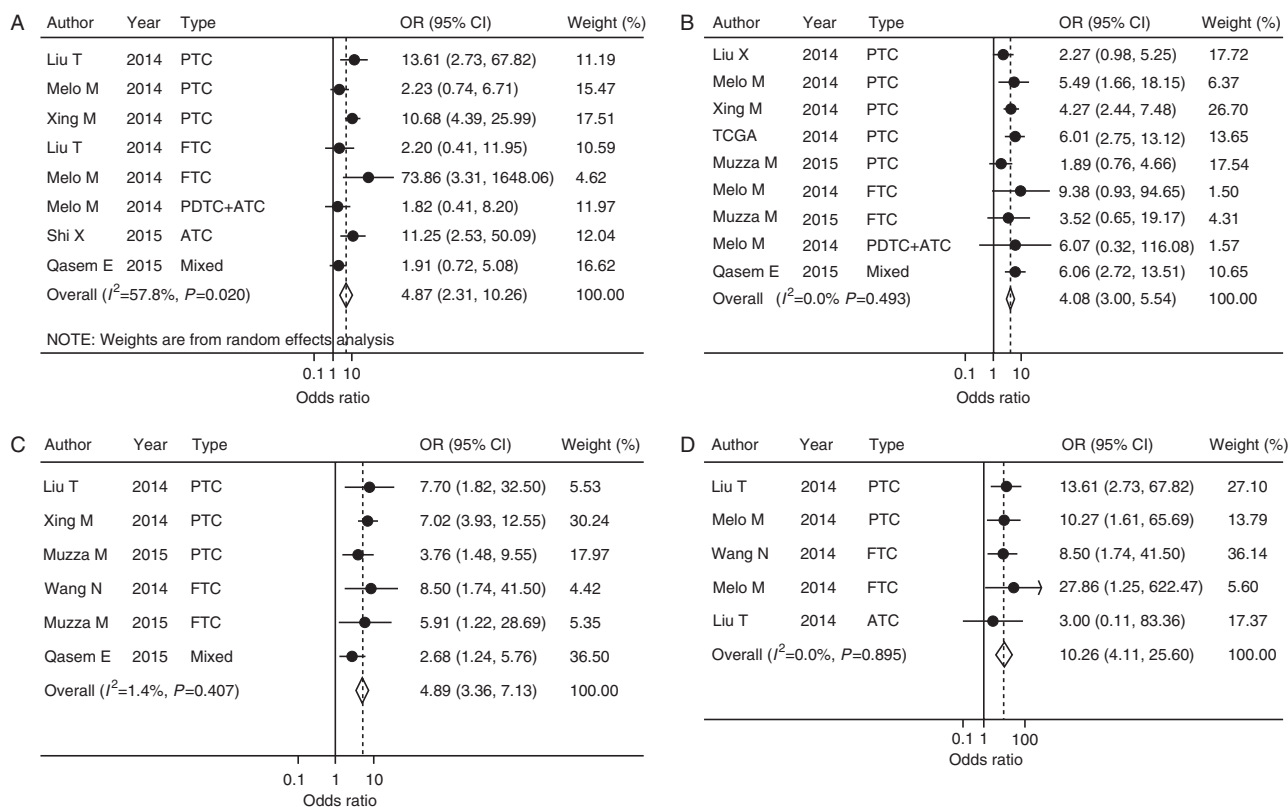
<sup>b</sup>Comparisons were performed using  $\chi^2$  test. Information on certain parameters was not available in all studies and this table summarizes the data from studies that provided the available information as detailed in the Supplemental Table S1.

**Figure 1**

Meta-analysis of the association of *TERT* promoter mutations with extrathyroidal invasion (A) and vascular invasion (B) of thyroid cancer. The between-study heterogeneity was tested by a  $\chi^2$ -based Q-test and quantified by the  $I^2$  metric, which ranged from 0 to 100% and was considered low for  $I^2 < 25\%$ , modest for 25–50%, and large for  $> 50\%$  (Higgins *et al.* 2003). The combined OR was calculated by the fixed-effects model (the Mantel–Haenszel method) when between-study heterogeneity was absent (Mantel & Haenszel 1959); otherwise the random-effects model (the Dersimonian and Laird method) was used (Dersimonian & Laird 1986). The circles and horizontal lines correspond to the study-specific OR and 95% CI respectively. The combined ORs and their 95% CIs are indicated by the diamonds. PTC, papillary thyroid cancer; FTC, follicular thyroid cancer; PDTC, poorly differentiated thyroid cancer; ATC, anaplastic thyroid cancer. OR, odds ratio.

male sex of patients is also associated with *TERT* promoter mutations, being 37.4% male in mutation-positive patients vs 24.8% in mutation-negative patients,  $P < 0.001$ . Larger tumor size is associated with *TERT* promoter mutations, being  $3.93 \pm 2.68$  vs  $2.69 \pm 1.93$  cm ( $P < 0.001$ ) in *TERT* mutation-positive tumors vs *TERT* mutation-negative tumors. *TERT* promoter mutations are also significantly associated with extrathyroidal invasion, vascular invasion, distant metastasis and stage III/IV of thyroid cancer. Specifically, extrathyroidal invasion of thyroid cancer is seen in 55.6% of *TERT* mutation-positive patients vs 36.1% of *TERT* mutation-negative patients ( $P < 0.001$ ). Meta-analysis reveals that *TERT* promoter

mutations significantly increase the risk of extrathyroidal invasion with an odds ratio (OR) of 2.26 (95% CI, 1.32–3.86;  $P = 0.003$ ; Fig. 1A). Vascular invasion is also more common in the *TERT* promoter mutation-positive patients than the mutation-negative patients, being 42.2 vs 28.4% ( $P = 0.002$ ), with an OR of 1.83 (95% CI, 1.19–2.82;  $P = 0.006$ ; Fig. 1B). There is no significant difference in lymph node metastasis between the *TERT* promoter mutation-positive and mutation-negative patients, although there is a strong trend of higher prevalence in the mutation-positive patients (Table 4). The distant metastasis is far more common in *TERT* promoter mutation-positive patients than mutation-negative patients, being 33.2 vs 10.5% ( $P < 0.001$ ) (Table 4), with an OR of 4.87 (95% CI, 2.31–10.26;  $P < 0.001$ ; Fig. 2A). Stage III/IV disease is similarly far more common in the *TERT* promoter mutation-positive patients than the mutation-negative patients, being 58.7 vs 25.7% ( $P < 0.001$ ) (Table 4), with an OR of 4.08 (95% CI, 3.00–5.54;  $P < 0.001$ ; Fig. 2B). Importantly, *TERT* promoter mutations are strongly associated with poor clinical outcomes of thyroid cancer on the analysis of large number of cases, including cancer recurrence and patient mortality (Table 4, Fig. 2C and D). Specifically, recurrence in *TERT* promoter mutation-positive patients vs mutation-negative patients is 52.1 vs 18.7% ( $P < 0.001$ ), with an OR of 4.89 (95% CI, 3.36–7.13;  $P < 0.001$ ; Fig. 2C). Patient death rate is 41.9% in the *TERT* promoter mutation-positive patients vs 5.6% in the mutation-negative patients ( $P < 0.001$ , Table 4), with an OR of 10.26 (95% CI, 4.11–25.60;  $P < 0.001$ ; Fig. 2D). It is worth noting that a significant and strong association of *TERT* promoter mutations with cancer recurrence (Fig. 2C) and patient death (Fig. 2D) was uniformly observed in all studies for PTC and FTC except for one study on ATC. Overall, the association of *TERT* promoter mutations with patient mortality is the strongest and most significant among all the clinicopathological parameters (Table 4 and Fig. 2). In fact, the four most aggressive clinicopathological parameters, including distant metastasis, disease stage III/IV, cancer recurrence and patient mortality, are all far more commonly and significantly associated with *TERT* promoter mutations than other clinicopathological parameters (Table 4 and Fig. 2). An analysis focused on PTC, the most common thyroid cancer, revealed similar results on the genetic–clinicopathological relationship as on the overall analysis of all cancers (Table 4). Analyses on other individual types of thyroid cancer showed mostly also a significant association between *TERT* promoter mutations and aggressive clinicopathological outcomes, particularly



**Figure 2**

Meta-analysis of the association of *TERT* promoter mutations with thyroid cancer distant metastasis (A), tumor stage III/IV (B), tumor recurrence (C) and patients mortality (D). The between-study heterogeneity and combined OR were calculated as described in the legend to Fig. 1. The circles and horizontal

lines correspond to the study-specific OR and 95% CI. The combined ORs and their 95% CIs are indicated by the diamonds. PTC, papillary thyroid cancer; FTC, follicular thyroid cancer; PDTC, poorly differentiated thyroid cancer; ATC, anaplastic thyroid cancer. OR, odds ratio.

Endocrine-Related Cancer

distant metastasis, disease stage III/IV, tumor recurrence and patient mortality, although in some cases just an association trend was seen, likely due to the small numbers of cases (Supplemental Table S1, see section on supplementary data given at the end of this article). Taken together, these data strongly suggest that *TERT* promoter mutations play an important role in the aggressiveness of thyroid cancer and are strong predictors for poor clinical outcomes of thyroid cancer. This conception is also consistent with our initial report that *TERT* promoter mutations were far more common in the aggressive thyroid cancers PDTC and ATC than the generally indolent differentiated PTC and FTC (Liu *et al.* 2013b), which have been confirmed in many subsequent reports (Tables 1 and 2). Interestingly, the *TERT* promoter mutation prevalence order of TCPTC  $\gg$  CPTC  $>$  FVPTC (Table 3) is similar to the clinicopathological aggressiveness order of the three PTC variants reported recently (Shi *et al.* 2016), further supporting a role of *TERT* promoter mutations in the development of aggressiveness of thyroid cancer.

### Association of *TERT* promoter mutations with *BRAF* V600E mutation in thyroid cancer

*BRAF* V600E is the most common oncogene in thyroid cancer that plays a fundamental role in the tumorigenesis and progression of thyroid cancer, particularly PTC (Xing 2005, 2007). Our initial study on *TERT* promoter mutations in thyroid cancer also reported an interesting association of *TERT* promoter mutations with the *BRAF* V600E mutation in PTC (Liu *et al.* 2013b). This finding was confirmed in many subsequent studies. As summarized in Table 5, on the overall analysis of the large pooled data, *TERT* promoter mutations are found in 146/1 294 (11.3%) *BRAF* V600E-negative cases vs 197/1 104 (17.8%) *BRAF* V600E-positive cases; inversely, *BRAF* V600E is found in 907/2 055 (44.1%) *TERT* mutation-negative cases vs 97/343 (57.4%) *TERT* mutation-positive cases, with an OR of 2.46 (95% CI, 1.89–3.20;  $P < 0.001$ ; Fig. 3). Similar results are obtained when analyses are performed only on PTC or advanced types of thyroid cancer, PDTC and ATC

**Table 5** Association of *TERT* promoter mutations with *BRAF* V600E mutation and in thyroid cancer

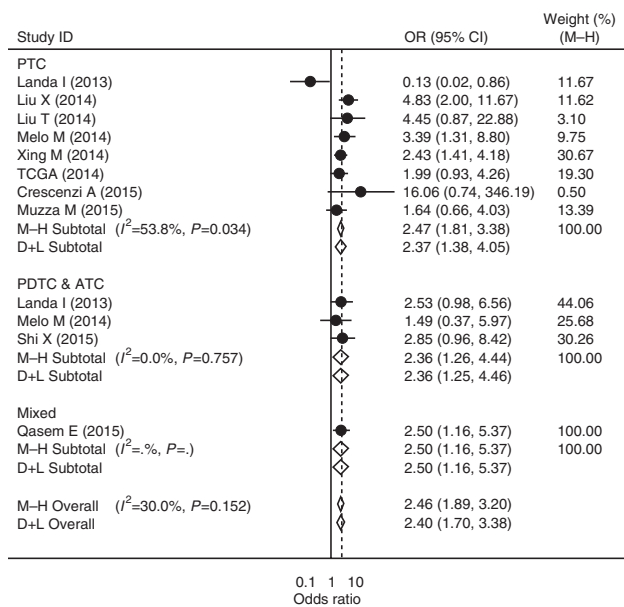
Cancer type	Study No.	TERT mutation		BRAF mutation		P	Reference
		BRAF –	BRAF +	TERT –	TERT +		
PTC	1	11/153 (7.2)	19/104 (18.3)	85/227 (37.4)	19/30 (63.3)	0.009	Liu <i>et al.</i> (2013b)
	2	6/12 (50.0)	2/17 (11.8)	15/21 (71.4)	2/8 (25.0)	0.038	Landa <i>et al.</i> (2013)
	3	1/93 (1.1)	12/65 (18.5)	53/145 (36.6)	12/13 (92.3)	<0.001	Vinagre <i>et al.</i> (2013)
	4	6/158 (3.8)	40/250 (16.0)	210/362 (58.0)	40/46 (87.0)	<0.001	Liu <i>et al.</i> (2014b)
	5	2/19 (10.5)	11/32 (34.4)	21/38 (55.3)	11/13 (84.6)	0.096	Liu <i>et al.</i> (2014a)
	6	6/153 (3.9)	18/148 (12.2)	130/277 (46.9)	18/24 (75.0)	0.008	Melo <i>et al.</i> (2014)
	7	26/313 (8.3)	35/194 (18.0)	159/446 (35.7)	35/61 (57.4)	0.001	Xing <i>et al.</i> (2014a)
	8	10/161 (6.2)	26/223 (11.7)	197/348 (56.6)	26/36 (72.2)	0.071	TCGA (2014)
	9	0/10 (0)	3/11 (27.3)	8/27 (29.6)	3/3 (100)	0.041	Crescenzi <i>et al.</i> (2015)
	10	12/118 (10.2)	10/64 (15.6)	54/160 (33.8)	10/22 (45.5)	0.281	Muzza <i>et al.</i> (2015)
	Subtotal	68/953 (7.1)	145/939 (15.4)	794/1679 (47.3)	145/213 (68.1)	<0.001	
PDTC & ATC	2	21/49 (42.9)	19/29 (65.5)	10/38 (26.3)	19/40 (47.5)	0.053	Landa <i>et al.</i> (2013)
	3	1/11 (9.1)	1/5 (20.0)	4/14 (28.6)	1/2 (50.0)	1.000	Vinagre <i>et al.</i> (2013)
	6	17/55 (30.9)	4/10 (40.0)	6/44 (13.6)	4/21 (19.0)	0.715	Melo <i>et al.</i> (2014)
	11	28/90 (31.1)	9/16 (56.3)	7/69 (10.1)	9/37 (24.3)	0.052	Shi <i>et al.</i> (2015)
		Subtotal	66/194 (34.0)	32/55 (58.2)	23/151 (15.2)	32/98 (32.7)	0.001
Mixed	12	12/147 (8.2)	20/110 (18.2)	90/225 (40.0)	20/32 (62.5)	0.016	Qasem <i>et al.</i> (2015)
Overall		146/1294 (11.3)	197/1104 (17.8)	907/2055 (44.1)	197/343 (57.4)	<0.001	

Because of the same investigator origin, there are potential overlaps of cases between Study Nos 1 and 7 and between Study Nos 3 and 6. The data of Study Nos 1 and 3 were excluded from the pooled analyses. *P* value was calculated by  $\chi^2$  test or, for small cell sizes, Fisher's exact test. PTC, papillary thyroid cancer; PDTC, poorly differentiated thyroid cancer; ATC, anaplastic thyroid cancer.

(Table 5 and Fig. 3). Specifically, for PTC, *TERT* promoter mutations are found in 68/953 (7.1%) *BRAF* V600E-negative cases vs 145/939 (15.4%) *BRAF* V600E-positive cases; inversely, *BRAF* V600E is found in 794/1679 (47.3%) *TERT* mutation-negative cases vs 145/213 (68.1%) *TERT* mutation-positive cases, with an OR of 2.37 (95% CI, 1.38–4.05; *P* < 0.001; Fig. 3). For PDTC/ATC, *TERT* promoter mutations are found in 66/194 (34.0%) *BRAF* V600E-negative cases vs 32/55 (58.2%) *BRAF* V600E-positive cases; inversely, *BRAF* V600E is found in 23/151 (15.2%) *TERT* mutation-negative cases vs 32/98 (32.7%) *TERT* mutation-positive cases, with an OR of 2.36 (95% CI, 1.26–4.44; *P* = 0.008; Fig. 3). One exception to the highly positive association between *TERT* promoter mutations and *BRAF* V600E mutation reported in many studies and confirmed in this meta-analysis is the study by Landa *et al.* (2013) in which the authors reported an inverse relationship between *TERT* promoter mutations and the *BRAF* V600E mutation. It is not clear how to interpret this result, but this is the only study that has reported an inverse relationship between the two mutations. Interestingly, several studies also reported an association between *TERT* promoter mutations and the *BRAF* V600E mutation in melanoma (Horn *et al.* 2013, Griewank *et al.* 2014), suggesting that such a relationship between the two oncogenic genetic events may be a general phenomenon in human cancer.

We have demonstrated in a large study that coexistence of *BRAF* V600E and *TERT* promoter mutations constitutes a unique genetic background that drives particularly aggressive pathogenesis and poor clinical outcomes of PTC (Xing *et al.* 2014a). In this study, when the PTC patients were divided into four groups – no mutation, *BRAF* V600E mutation alone, *TERT* promoter mutation alone and coexistence of the two mutations, the group with both mutations was far more robustly associated with virtually all the conventional high-risk factors, such as large-tumor size, lymph-node metastasis, extrathyroidal invasion, vascular invasion, distant metastasis and advanced disease stages III/IV than other groups. *BRAF* V600E and *TERT* promoter mutations each alone in fact had a modest effect and there was a strong incremental effect of the coexisting mutations over either mutation alone. This was even more clearly the case with the structural tumor recurrence patterns of PTC. Specifically, the recurrence of PTC was 8.7, 16.3, 19.2 and 68.6% in the above defined corresponding four groups respectively over a median follow-up time of two years in 507 patients; these corresponded to hazard ratios (95% CI) of 1.0, 2.24 (1.29–3.88), 1.69 (0.65–4.43) and 8.51 (4.84–14.97) respectively (Xing *et al.* 2014a). We also demonstrated a similar robust synergistic impact of coexisting *BRAF* and *TERT* promoter mutations on disease-specific mortality of patients with PTC in 607 patients (Xing *et al.* 2014b).





**Figure 3** Meta-analysis of the association between *BRAF* V600E and *TERT* promoter mutations in thyroid cancer. The between-study heterogeneity and combined OR were calculated as described in Fig. 1. The circles and horizontal lines correspond to the study-specific OR and 95% CI. The combined ORs and their 95% CIs are indicated by the diamonds. PTC, papillary thyroid cancer; PDTC, poorly differentiated thyroid cancer; ATC, anaplastic thyroid cancer. OR, odds ratio.

The effect of *BRAF* V600E mutation and *TERT* promoter mutation each alone on the mortality was also modest. In these analyses, the effect of coexisting *BRAF* V600E and *TERT* promoter mutations on PTC recurrence and patient mortality remained strongly significant even after the multivariate adjustment for multiple conventional risk factors and was incremental over either mutation alone. These results suggest that, indeed, *BRAF* and *TERT* team up for trouble in thyroid cancer as commented in a recent

commentary by Ngeow & Eng (2014). These results also suggest that the role of *BRAF* V600E mutation previously observed and the role of *TERT* promoter mutations discussed above in the aggressiveness of thyroid cancer are substantially attributable to the synergistic effect of the coexisting two mutations. One potential molecular mechanism to explain this synergistic effect of coexisting *BRAF* V600E and *TERT* promoter mutations is that, as discussed previously (Liu *et al.* 2013b, Xing *et al.* 2014a), the *BRAF* V600E-activated MAP kinase pathway upregulates the ETS transcriptional factors; the latter can then avidly bind to the consensus binding site in the *TERT* promoter created by C228T or C250T mutation to robustly upregulate the expression of *TERT*; highly expressed *TERT* would play a profound tumor-promoting role in thyroid cancer as in other human cancers as discussed above. As *BRAF* V600E has been shown to play an important role in the oncogenic extracellular micro environmental changes in the pathogenesis of thyroid cancer (Nucera *et al.* 2010, 2011, Nucera 2013), it remains an interesting possibility to be explored that the synergistic effects of *BRAF* V600E and *TERT* promoter mutations on the progression and aggressiveness of thyroid cancer may involve tumor invasion-promoting molecular changes in the micro environments of thyroid cancer.

### Association of *TERT* promoter mutations with *RAS* mutations in thyroid cancer

*RAS* mutations are major oncogenic genetic alterations and commonly occur in thyroid cancer, particularly in FTC, PDTC and ATC (Xing 2013). Several studies investigated the relationship between *RAS* mutations and *TERT* promoter mutations in thyroid cancers (Table 6). One individual study on FTC showed a significant association

**Table 6** Association of *TERT* promoter mutations with *RAS* mutations in thyroid cancer

Cancer type	Study No.	<i>TERT</i> mutation		<i>RAS</i> mutation		P	OR (95% CI)	Reference
		RAS –	RAS +	<i>TERT</i> –	<i>TERT</i> +			
FTC	1	4/50 (8.0)	5/14 (35.7)	9/55 (16.4)	5/9 (55.6)	0.019	6.39 (1.43–28.53)	Vinagre <i>et al.</i> (2013)
	2	7/50 (14.0)	4/14 (28.6)	10/53 (18.9)	4/11 (36.4)	0.237	2.46 (0.60–10.05)	Melo <i>et al.</i> (2014)
	3	6/44 (13.6)	2/14 (14.3)	12/50 (24.0)	2/8 (25.0)	1.000	1.06 (0.19–5.94)	Muzza <i>et al.</i> (2015)
	Subtotal	13/94 (13.8)	6/28 (21.4)	22/103 (21.4)	6/19 (31.6)	0.330	1.71 (0.58–5.02)*	
PDTC & ATC	1	4/29 (13.8)	1/1 (100)	0/25 (0)	1/5 (20.0)	0.167	17.00 (0.59–486.41)	Vinagre <i>et al.</i> (2013)
	2	13/44 (29.5)	8/17 (47.1)	9/40 (22.5)	8/21 (38.1)	0.197	2.12 (0.67–6.71)	Melo <i>et al.</i> (2014)
	4	26/58 (44.8)	14/20 (70.0)	6/38 (15.8)	14/40 (35.0)	0.052	2.87 (0.97–8.52)	Landa <i>et al.</i> (2013)
	Subtotal	39/102 (38.2)	22/37 (59.5)	15/78 (19.2)	22/61 (36.1)	0.026	2.50 (1.14–5.50) <sup>†</sup>	
Overall		52/196 (26.5)	28/65 (43.1)	37/181 (20.4)	28/80 (35.0)	0.012	2.21 (1.18–4.15) <sup>‡</sup>	

Because of the same investigator origin, there are potential overlaps of cases between Study Nos 1 and 2. The data of Study No. 1 was excluded from the pooled analyses. The combined odds ratio (OR) and 95% CI were calculated by meta-analysis. P value was calculated by  $\chi^2$  test or, for small cell sizes, Fisher's exact test. \* $P=0.327$ ; <sup>†</sup> $P=0.022$ ; <sup>‡</sup> $P=0.014$ . FTC, follicular thyroid cancer; PDTC, poorly differentiated thyroid cancer; ATC, anaplastic thyroid cancer.

between *TERT* promoter mutations and *RAS* mutations (Vinagre *et al.* 2013). The remaining studies individually showed a trend of such association. The pooled data of PDTC and ATC show a significant association between *TERT* promoter mutations and *RAS* mutations, with an OR of 2.50 (95% CI, 1.14–5.50,  $P=0.022$ ). When all the thyroid cancers are pooled together, this association remains significant, with an OR of 2.21 (95% CI, 1.18–4.15) and an even more significant  $P$  value of 0.014 (Table 6). The biological and clinical significance of this association remains to be investigated. It is possible that, like the coexisting *TERT* promoter mutations and *BRAF* mutations in PTC, coexisting *TERT* promoter and *RAS* mutations may also play a cooperative role in thyroid tumorigenesis and promote tumor aggressiveness and poor clinical outcomes of thyroid cancer. *BRAF* V600E synergizes the role of *TERT* promoter mutations through activating the MAP kinase pathway. *RAS* mutations likely synergize the role of *TERT* promoter mutations through activating the PI3K pathway since *RAS* mutations preferentially activate this pathway over the MAP kinase pathway in thyroid cancer (Xing 2013). As such, coexistence of *TERT* promoter mutations and *RAS* mutations may represent a unique genetic background that is particularly important in FTC, PDTC and ATC in which *RAS* mutations are particularly common and the PI3K pathway plays a particularly important role (Saji & Ringel 2010, Xing 2010, 2013). These remain to be further investigated and established in the future.

## Conclusion

It has been <3 years since the initial report on *TERT* promoter mutations in thyroid cancer (Liu *et al.* 2013b), while substantial progress has occurred in this exciting new field. Much has been known about the biological and clinical relevance of these mutations in thyroid cancer in this short time. Studies from various populations and regions in the world uniformly found *TERT* promoter mutations to be present in thyroid cancers, but not benign thyroid tumors, and be more common in aggressive types of thyroid cancers. These mutations are also more commonly associated with aggressive tumor behaviors and poor clinical outcomes, including tumor recurrence and patient mortality. A particular interesting and important aspect of *TERT* promoter mutations in PTC is their association with the *BRAF* V600E mutation and the robust synergistic impact of the coexisting two mutations on aggressive clinicopathological outcomes of PTC, particularly tumor recurrence and patient mortality.

These results are consistent with the proposed model in which *TERT* promoter mutations create consensus binding sites for ETS transcriptional factors for the latter to activate the expression of *TERT*, a process that can be upregulated by the *BRAF* V600E/MAP kinase signaling pathway. A similar synergistic effect between *TERT* promoter mutations and *RAS* mutations, likely through activating the PI3K pathway, may also exist in thyroid cancer. These clinicopathological data strongly support a prominent role of *TERT* promoter mutations in the tumorigenesis and progression of thyroid cancer, which is well corroborated by previous results on similar differential expression patterns of *TERT* in benign and malignant thyroid tumors. As such, *TERT* promoter mutations are promising diagnostic and prognostic genetic markers for thyroid cancer, which is highly applicable clinically as demonstrated recently by applying them to thyroid fine needle aspiration biopsy for such purposes (Liu & Xing 2014, Nikiforov *et al.* 2014, Shrestha *et al.* 2015). Future studies will need to more specifically define such clinical utilities, elucidate the biological mechanisms of the role of *TERT* promoter mutations in thyroid tumorigenesis, and explore and establish the therapeutic utilities of targeting *TERT* for thyroid cancer.

### Supplementary data

This is linked to the online version of the paper at <http://dx.doi.org/10.1530/ERC-15-0533>.

### Declaration of interest

The authors declare that there is no conflict of interest that could be perceived as prejudicing the impartiality of the review.

### Funding

This work was supported by NIH grants R01CA189224 and R01CA113507 to M Xing.

## References

- Asaad NY, Abd El-Wahed MM & Mohammed AG 2006 Human telomerase reverse transcriptase (hTERT) gene expression in thyroid carcinoma: diagnostic and prognostic role. *Journal of the Egyptian National Cancer Institute* **18** 8–16.
- Ballester LY, Sarabia SF, Sayeed H, Patel N, Baalwa J, Athanassaki I, Hernandez JA, Fang E, Quintanilla NM, Roy A *et al.* 2015 Integrating molecular testing in the diagnosis and management of children with thyroid lesions. *Pediatric and Developmental Pathology* [in press]. (doi:10.2350/15-05-1638-OA.1)
- Bell RJ, Rube HT, Kreig A, Mancini A, Fouse SD, Nagarajan RP, Choi S, Hong C, He D, Pekmezci M *et al.* 2015 Cancer. The transcription factor

- GABP selectively binds and activates the mutant TERT promoter in cancer. *Science* **348** 1036–1039. (doi:10.1126/science.aab0015)
- de Biase D, Gandolfi G, Ragazzi M, Eszlinger M, Sancisi V, Gugnoni M, Visani M, Pession A, Casadei G, Durante C *et al.* 2015 TERT promoter mutations in papillary thyroid microcarcinomas. *Thyroid* **25** 1013–1019. (doi:10.1089/thy.2015.0101)
- Blasco MA 2005 Telomeres and human disease: ageing, cancer and beyond. *Nature Review Genetics* **6** 611–622. (doi:10.1038/nrg1656)
- Bodnar AG, Ouellette M, Frolkis M, Holt SE, Chiu CP, Morin GB, Harley CB, Shay JW, Lichtsteiner S & Wright WE 1998 Extension of life-span by introduction of telomerase into normal human cells. *Science* **279** 349–352. (doi:10.1126/science.279.5349.349)
- Bojesen SE, Pooley KA, Johnatty SE, Beesley J, Michailidou K, Tyrer JP, Edwards SL, Pickett HA, Shen HC, Smart CE *et al.* 2013 Multiple independent variants at the TERT locus are associated with telomere length and risks of breast and ovarian cancer. *Nature Genetics* **45** 371–384. (doi:10.1038/ng.2566)
- Cancer Genome Atlas Research Network 2014 Integrated genomic characterization of papillary thyroid carcinoma. *Cell* **159** 676–690. (doi:10.1016/j.cell.2014.09.050)
- Chindris AM, Casler JD, Bernet VJ, Rivera M, Thomas C, Kachergus JM, Necela BM, Hay ID, Westphal SA, Grant CS *et al.* 2015 Clinical and molecular features of Hurtle cell carcinoma of the thyroid. *Journal of Clinical Endocrinology and Metabolism* **100** 55–62. (doi:10.1210/jc.2014-1634)
- Choi J, Southworth LK, Sarin KY, Venteicher AS, Ma W, Chang W, Cheung P, Jun S, Artandi MK, Shah N *et al.* 2008 TERT promotes epithelial proliferation through transcriptional control of a Myc- and Wnt-related developmental program. *PLoS Genetics* **4** e10. (doi:10.1371/journal.pgen.0040010)
- Codd V, Nelson CP, Albrecht E, Mangino M, Deelen J, Buxton JL, Hottenga JJ, Fischer K, Esko T, Surakka I *et al.* 2013 Identification of seven loci affecting mean telomere length and their association with disease. *Nature Genetics* **45** 422–427. (doi:10.1038/ng.2528)
- Crescenzi A, Trimboli P, Modica DC, Taffon C, Guidobaldi L, Taccogna S, Rainer A, Trombetta M, Papini E & Zelano G 2015 Preoperative assessment of TERT promoter mutation on thyroid core needle biopsies supports diagnosis of malignancy and addresses surgical strategy. *Hormone and Metabolic Research* [in press]. (doi:10.1055/s-0035-1548873)
- DerSimonian R & Laird N 1986 Meta-analysis in clinical trials. *Controlled Clinical Trials* **7** 177–188. (doi:10.1016/0197-2456(86)90046-2)
- Dettmer MS, Schmitt A, Steinert H, Capper D, Moch H, Komminoth P & Perren A 2015 Tall cell papillary thyroid carcinoma: new diagnostic criteria and mutations in BRAF and TERT. *Endocrine-Related Cancer* **22** 419–429. (doi:10.1530/ERC-15-0057)
- Feng J, Funk WD, Wang SS, Weinrich SL, Avilion AA, Chiu CP, Adams RR, Chang E, Allsopp RC, Yu J *et al.* 1995 The RNA component of human telomerase. *Science* **269** 1236–1241. (doi:10.1126/science.7544491)
- Gandolfi G, Ragazzi M, Ragazzini A, Piana S, Ciarrocchi A & Sancisi V 2015 TERT promoter mutations are associated with distant metastases in papillary thyroid carcinoma. *European Journal of Endocrinology* **172** 403–413. (doi:10.1530/EJE-14-0837)
- Ghosh A, Saginc G, Leow SC, Khattar E, Shin EM, Yan TD, Wong M, Zhang Z, Li G, Sung WK *et al.* 2012 Telomerase directly regulates NFκB-dependent transcription. *Nature Cell Biology* **14** 1270–1281. (doi:10.1038/ncb2621)
- Gonzalez-Suarez E, Samper E, Ramirez A, Flores JM, Martin-Caballero J, Jorcano JL & Blasco MA 2001 Increased epidermal tumors and increased skin wound healing in transgenic mice overexpressing the catalytic subunit of telomerase, mTERT, in basal keratinocytes. *EMBO Journal* **20** 2619–2630. (doi:10.1093/emboj/20.11.2619)
- Greider CW & Blackburn EH 2004 Tracking telomerase. *Cell* **116** S83–S86. (doi:10.1016/S0092-8674(04)00053-4)
- Griewank KG, Murali R, Puig-Butille JA, Schilling B, Livingstone E, Potrony M, Carrera C, Schimming T, Möller I, Schwamborn M *et al.* 2014 TERT promoter mutation status as an independent prognostic factor in cutaneous melanoma. *Journal of National Cancer Institute* **106** pii: dju246. (doi:10.1093/jnci/dju246)
- Hahn WC, Counter CM, Lundberg AS, Beijersbergen RL, Brooks MW & Weinberg RA 1999 Creation of human tumour cells with defined genetic elements. *Nature* **400** 464–468. (doi:10.1038/22780)
- Hanahan D & Weinberg RA 2011 Hallmarks of cancer: the next generation. *Cell* **144** 646–674. (doi:10.1016/j.cell.2011.02.013)
- Harley CB & Villeponteau B 1995 Telomeres and telomerase in aging and cancer. *Current Opinion in Genetics & Development* **5** 249–255. (doi:10.1016/0959-437X(95)80016-6)
- Higgins JP, Thompson SG, Deeks JJ & Altman DG 2003 Measuring inconsistency in meta-analyses. *British Medical Journal* **327** 557–560. (doi:10.1136/bmj.327.7414.557)
- Horn S, Figl A, Rachakonda PS, Fischer C, Sucker A, Gast A, Kadel S, Moll I, Nagore E, Hemminki K *et al.* 2013 TERT promoter mutations in familial and sporadic melanoma. *Science* **339** 959–961. (doi:10.1126/science.1230062)
- Howlander N, Noone AM, Krapcho M, Garshell J, Miller D, Altekruse SF, Kosary CL, Yu M, Ruhl J, Tatalovich Z, *et al.* 2015 SEER Cancer Statistics Review, 1975–2012, Bethesda, MD: National Cancer Institute, <http://seer.cancer.gov/csr/1975-2012/>, based on November 2014 SEER data submission, posted to the SEER web site, April 2015. Accessed on October 25, 2015.
- Hrdlickova R, Nehyba J & Bose HR Jr 2012 Alternatively spliced telomerase reverse transcriptase variants lacking telomerase activity stimulate cell proliferation. *Molecular Cell Biology* **32** 4283–4296. (doi:10.1128/MCB.00550-12)
- Huang FW, Hodis E, Xu MJ, Kryukov GV, Chin L & Garraway LA 2013 Highly recurrent TERT promoter mutations in human melanoma. *Science* **339** 957–959. (doi:10.1126/science.1229259)
- Hundahl SA, Fleming ID, Fremgen AM & Menck HR 1998 A National Cancer Data Base report on 53,856 cases of thyroid carcinoma treated in the US, 1985–1995 [see comments]. *Cancer* **83** 2638–2648. (doi:10.1002/(SICI)1097-0142(19981215)83:12<2638::AID-CNCR31>3.0.CO;2-1)
- Ito Y, Yoshida H, Tomoda C, Uruno T, Takamura Y, Miya A, Kobayashi K, Matsuzuka F, Kuma K & Miyauchi A 2005 Telomerase activity in thyroid neoplasms evaluated by the expression of human telomerase reverse transcriptase (hTERT). *Anticancer Research* **25** 509–514.
- Janknecht R 2004 On the road to immortality: hTERT upregulation in cancer cells. *FEBS Letters* **564** 9–13. (doi:10.1016/S0014-5793(04)00356-4)
- Killela PJ, Reitman ZJ, Jiao Y, Bettegowda C, Agrawal N, Diaz LA Jr, Friedman AH, Friedman H, Gallia GL, Giovannella BC *et al.* 2013 TERT promoter mutations occur frequently in gliomas and a subset of tumors derived from cells with low rates of self-renewal. *PNAS* **110** 6021–6026. (doi:10.1073/pnas.1303607110)
- Kim NW, Piatyszek MA, Prowse KR, Harley CB, West MD, Ho PL, Coviello GM, Wright WE, Weinrich SL & Shay JW 1994 Specific association of human telomerase activity with immortal cells and cancer. *Science* **266** 2011–2015. (doi:10.1126/science.7605428)
- Koh CM, Khattar E, Leow SC, Liu CY, Muller J, Ang WX, Li Y, Franzoso G, Li S, Guccione E *et al.* 2015 Telomerase regulates MYC-driven oncogenesis independent of its reverse transcriptase activity. *Journal of Clinical Investigation* **125** 2109–2122. (doi:10.1172/JCI79134)
- Landa I, Ganly I, Chan TA, Mitsutake N, Matsue M, Ibrahimpasic T, Ghossein RA & Fagin JA 2013 Frequent somatic TERT promoter mutations in thyroid cancer: higher prevalence in advanced forms of the disease. *Journal of Clinical Endocrinology and Metabolism* **98** E1562–E1566. (doi:10.1210/jc.2013-2383)
- Lee YS, Kim Y, Jeon S, Bae JS, Jung SL & Jung CK 2015 Cytologic, clinicopathologic, and molecular features of papillary thyroid carcinoma with prominent hobnail features: 10 case reports and systematic literature review. *International Journal of Clinical and Experimental Pathology* **8** 7988–7997.

- Liu R & Xing M 2014 Diagnostic and prognostic TERT promoter mutations in thyroid fine-needle aspiration biopsy. *Endocrine-Related Cancer* **21** 825–830. (doi:10.1530/ERC-14-0359)
- Liu X, Wu G, Shan Y, Hartmann C, von Deimling A & Xing M 2013a Highly prevalent TERT promoter mutations in bladder cancer and glioblastoma. *Cell Cycle* **12** 1637–1638. (doi:10.4161/cc.24662)
- Liu X, Bishop J, Shan Y, Pai S, Liu D, Murugan AK, Sun H, El-Naggar AK & Xing M 2013b Highly prevalent TERT promoter mutations in aggressive thyroid cancers. *Endocrine-Related Cancer* **20** 603–610. (doi:10.1530/ERC-13-0210)
- Liu T, Wang N, Cao J, Sofiadis A, Dinets A, Zedenius J, Larsson C & Xu D 2014a The age- and shorter telomere-dependent TERT promoter mutation in follicular thyroid cell-derived carcinomas. *Oncogene* **33** 4978–4984. (doi:10.1038/onc.2013.446)
- Liu X, Qu S, Liu R, Sheng C, Shi X, Zhu G, Murugan AK, Guan H, Yu H, Wang Y *et al.* 2014b TERT promoter mutations and their association with BRAF V600E mutation and aggressive clinicopathological characteristics of thyroid cancer. *Journal of Clinical Endocrinology and Metabolism* **99** E1130–E1136. (doi:10.1210/jc.2013-4048)
- Low KC & Tergaonkar V 2013 Telomerase: central regulator of all of the hallmarks of cancer. *Trends in Biochemical Sciences* **38** 426–434. (doi:10.1016/j.tibs.2013.07.001)
- Mantel N & Haenszel W 1959 Statistical aspects of the analysis of data from retrospective studies of disease. *Journal of National Cancer Institute* **22** 719–748.
- Melo M, da Rocha AG, Vinagre J, Batista R, Peixoto J, Tavares C, Celestino R, Almeida A, Salgado C, Eloy C *et al.* 2014 TERT promoter mutations are a major indicator of poor outcome in differentiated thyroid carcinomas. *Journal of Clinical Endocrinology and Metabolism* **99** E754–E765. (doi:10.1210/jc.2013-3734)
- Meyerson M, Counter CM, Eaton EN, Ellisen LW, Steiner P, Caddle SD, Ziaugra L, Beijersbergen RL, Davidoff MJ, Liu Q *et al.* 1997 hEST2, the putative human telomerase catalytic subunit gene, is up-regulated in tumor cells and during immortalization. *Cell* **90** 785–795. (doi:10.1016/S0092-8674(00)80538-3)
- Moyzis RK, Buckingham JM, Cram LS, Dani M, Deaven LL, Jones MD, Meyne J, Ratliff RL & Wu JR 1988 A highly conserved repetitive DNA sequence, (TTAGGG)<sub>n</sub>, present at the telomeres of human chromosomes. *PNAS* **85** 6622–6626. (doi:10.1073/pnas.85.18.6622)
- Muzza M, Colombo C, Rossi S, Tosi D, Cirello V, Perrino M, De Leo S, Magnani E, Pignatti E, Vigo B *et al.* 2015 Telomerase in differentiated thyroid cancer: promoter mutations, expression and localization. *Molecular and Cellular Endocrinology* **399** 288–295. (doi:10.1016/j.mce.2014.10.019)
- Ngeow J & Eng C 2014 TERT and BRAF in thyroid cancer: teaming up for trouble. *Journal of Clinical Oncology* **32** 2683–2684. (doi:10.1200/JCO.2014.56.5614)
- Nikiforov YE, Carty SE, Chiosea SI, Coyne C, Duvvuri U, Ferris RL, Gooding WE, Hodak SP, LeBeau SO, Ohori NP *et al.* 2014 Highly accurate diagnosis of cancer in thyroid nodules with follicular neoplasm/suspicious for a follicular neoplasm cytology by ThyroSeq v2 next-generation sequencing assay. *Cancer* **120** 3627–3634. (doi:10.1002/cncr.29038)
- Nucera C 2013 Targeting thyroid cancer microenvironment: basic research and clinical applications. *Frontiers in Endocrinology* **4** 167. (doi:10.3389/fendo.2013.00167)
- Nucera C, Porrello A, Antonello ZA, Mekel M, Nehs MA, Giordano TJ, Gerald D, Benjamin LE, Priolo C, Puxeddu E *et al.* 2010 B-Raf(V600E) and thrombospondin-1 promote thyroid cancer progression. *PNAS* **107** 10649–10654. (doi:10.1073/pnas.1004934107)
- Nucera C, Lawler J & Parangi S 2011 BRAF(V600E) and microenvironment in thyroid cancer: a functional link to drive cancer progression. *Cancer Research* **71** 2417–2422. (doi:10.1158/0008-5472.CAN-10-3844)
- Qasem E, Murugan AK, Al-Hindi H, Xing M, Almohanna M, Alswailem M & Alzahrani AS 2015 TERT promoter mutations in thyroid cancer: a report from a Middle Eastern population. *Endocrine-Related Cancer* **22** 901–908. (doi:10.1530/ERC-15-0396)
- Rafnar T, Sulem P, Stacey SN, Geller F, Gudmundsson J, Sigurdsson A, Jakobsdottir M, Helgadóttir H, Thorlacius S, Aben KK *et al.* 2009 Sequence variants at the TERT-CLPTM1L locus associate with many cancer types. *Nature Genetics* **41** 221–227. (doi:10.1038/ng.296)
- Saji M & Ringel MD 2010 The PI3K-Akt-mTOR pathway in initiation and progression of thyroid tumors. *Molecular and Cellular Endocrinology* **321** 20–28. (doi:10.1016/j.mce.2009.10.016)
- Saji M, Xydas S, Westra WH, Liang CK, Clark DP, Udelsman R, Umbricht CB, Sukumar S & Zeiger MA 1999 Human telomerase reverse transcriptase (hTERT) gene expression in thyroid neoplasms. *Clinical Cancer Research* **5** 1483–1489.
- Sarin KY, Cheung P, Gilson D, Lee E, Tennen RI, Wang E, Artandi MK, Oro AE & Artandi SE 2005 Conditional telomerase induction causes proliferation of hair follicle stem cells. *Nature* **436** 1048–1052. (doi:10.1038/nature03836)
- Shay JW & Bacchetti S 1997 A survey of telomerase activity in human cancer. *European Journal of Cancer* **33** 787–791. (doi:10.1016/S0959-8049(97)00062-2)
- Shi X, Liu R, Qu S, Zhu G, Bishop J, Liu X, Sun H, Shan Z, Wang E, Luo Y *et al.* 2015 Association of TERT promoter mutation 1,295,228 C>T with BRAF V600E mutation, older patient age, and distant metastasis in anaplastic thyroid cancer. *Journal of Clinical Endocrinology and Metabolism* **100** E632–E637. (doi:10.1210/jc.2014-3606)
- Shi X, Liu R, Basolo F, Giannini R, Shen X, Teng D, Guan H, Shan Z, Teng W, Musholt TJ *et al.* 2016 Differential clinicopathological risk and prognosis of major papillary thyroid cancer variants. *Journal of Clinical Endocrinology and Metabolism* **101** 264–274. (doi:10.1210/jc.2015-2917)
- Shrestha RT, Karunamurthy A, Amin K, Nikiforov YE & Caramori ML 2015 Multiple mutations detected preoperatively may predict aggressive behavior of papillary thyroid cancer and guide management – a case report. *Thyroid* **25** 1375–1378. (doi:10.1089/thy.2015.0278)
- Siegel R, Ma J, Zou Z & Jemal A 2014 Cancer statistics, 2014. *CA: A Cancer Journal for Clinicians* **64** 9–29. (doi:10.3322/caac.21208)
- Smith LL, Collier HA & Roberts JM 2003 Telomerase modulates expression of growth-controlling genes and enhances cell proliferation. *Nature Cell Biology* **5** 474–479. (doi:10.1038/ncb985)
- Stewart SA, Hahn WC, O'Connor BF, Banner EN, Lundberg AS, Modha P, Mizuno H, Brooks MW, Fleming M, Zimonjic DB *et al.* 2002 Telomerase contributes to tumorigenesis by a telomere length-independent mechanism. *PNAS* **99** 12606–12611. (doi:10.1073/pnas.182407599)
- Teng L, Specht MC, Barden CB & Fahey TJ III 2003 Antisense hTERT inhibits thyroid cancer cell growth. *Journal of Clinical Endocrinology and Metabolism* **88** 1362–1366. (doi:10.1210/jc.2002-021222)
- Umbricht CB, Saji M, Westra WH, Udelsman R, Zeiger MA & Sukumar S 1997 Telomerase activity: a marker to distinguish follicular thyroid adenoma from carcinoma. *Cancer Research* **57** 2144–2147.
- Vinagre J, Almeida A, Populo H, Batista R, Lyra J, Pinto V, Coelho R, Celestino R, Prazeres H, Lima L *et al.* 2013 Frequency of TERT promoter mutations in human cancers. *Nature Communications* **4** 2185. (doi:10.1038/ncomms3185)
- Wang Z, Zhu B, Zhang M, Parikh H, Jia J, Chung CC, Sampson JN, Hoskins JW, Hutchinson A, Burdette L *et al.* 2014a Imputation and subset-based association analysis across different cancer types identifies multiple independent risk loci in the TERT-CLPTM1L region on chromosome 5p15.33. *Human Molecular Genetics* **23** 6616–6633. (doi:10.1093/hmg/ddu363)
- Wang N, Liu T, Sofiadis A, Juhlin CC, Zedenius J, Hoog A, Larsson C & Xu D 2014b TERT promoter mutation as an early genetic event activating telomerase in follicular thyroid adenoma (FTA) and atypical FTA. *Cancer* **120** 2965–2979. (doi:10.1002/cncr.28800)

- Wang N, Xu D, Sofiadis A, Hoog A, Vukojevic V, Backdahl M, Zedenius J & Larsson C 2014c Telomerase-dependent and independent telomere maintenance and its clinical implications in medullary thyroid carcinoma. *Journal of Clinical Endocrinology and Metabolism* **99** E1571–E1579. (doi:10.1210/jc.2014-1158)
- Wyatt HD, West SC & Beattie TL 2010 InTERTpreting telomerase structure and function. *Nucleic Acids Research* **38** 5609–5622. (doi:10.1093/nar/gkq370)
- Xing M 2005 BRAF mutation in thyroid cancer. *Endocrine-Related Cancer* **12** 245–262. (doi:10.1677/erc.1.0978)
- Xing M 2007 BRAF mutation in papillary thyroid cancer: pathogenic role, molecular bases, and clinical implications. *Endocrine Reviews* **28** 742–762. (doi:10.1210/er.2007-0007)
- Xing M 2010 Genetic alterations in the phosphatidylinositol-3 kinase/Akt pathway in thyroid cancer. *Thyroid* **20** 697–706. (doi:10.1089/thy.2010.1646)
- Xing M 2013 Molecular pathogenesis and mechanisms of thyroid cancer. *Nature Review Cancer* **13** 184–199. (doi:10.1038/nrc3431)
- Xing M, Liu R, Liu X, Murugan AK, Zhu G, Zeiger MA, Pai S & Bishop J 2014a BRAF V600E and TERT promoter mutations cooperatively identify the most aggressive papillary thyroid cancer with highest recurrence. *Journal of Clinical Oncology* **32** 2718–2726. (doi:10.1200/JCO.2014.55.5094)
- Xing M, Liu R & Bishop J 2014b TERT promoter and BRAF mutations cooperatively promote papillary thyroid cancer-related mortality. *Thyroid* **24** (S1) A–131. (doi:10.1089/thy.2014.2410.abstracts.sc)

Received in final form 17 December 2015

Accepted 24 December 2015

Made available online as an Accepted Preprint

5 January 2016