

ERRATUM

ERRATUM: Evidence of cellular senescence during the development of estrogen-induced pituitary tumors

Maria Eugenia Sabatino^{1,2}, Juan Pablo Petiti^{1,2}, Liliana del Valle Sosa^{1,2}, Pablo Anibal Pérez^{1,2}, Silvina Gutiérrez^{1,2}, Carolina Leimgruber^{1,2}, Alexandra Latini³, Alicia Inés Torres^{1,2} and Ana Lucía De Paul^{1,2}

¹Centro de Microscopía Electrónica, Facultad de Ciencias Médicas, Universidad Nacional de Córdoba, Córdoba, Argentina

²Instituto de Investigaciones en Ciencias de la Salud (INICSA-CONICET), Córdoba, Argentina

³Laboratorio de Bioenergética y Estrés Oxidativo, Departamento de Bioquímica, Centro de Ciencias Biológicas, Florianópolis, Brazil

Correspondence should be addressed to A L De Paul: adepaul@cmefcm.uncor.edu

Endocrine-Related Cancer
(2022) 29, X1

The authors and journal apologise for an error in the above paper, which appeared in volume 22 part 3, pages 299–317. The error relates to Fig. 3 given on page 305, in which the E20 panel was mistakenly a duplicate of the E10 panel. The correct figure artwork is given below:

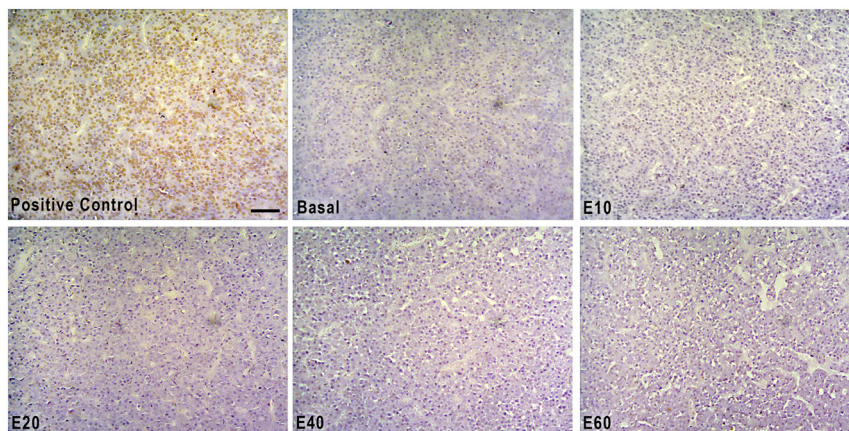


Figure 3

TUNEL assay on normal and experimental pituitary tumors. No significant detection of biochemical features of apoptosis (brown signal) was detected in histological samples from each experimental condition. Positive control: pituitary gland section treated with DNAase I. Data from a representative experiment for a total of three independent experiments with similar results from each experimental group. Scale bar = 100 μ m. A full colour version of this figure is available at <https://doi.org/10.1530/ERC-14-0333e>.