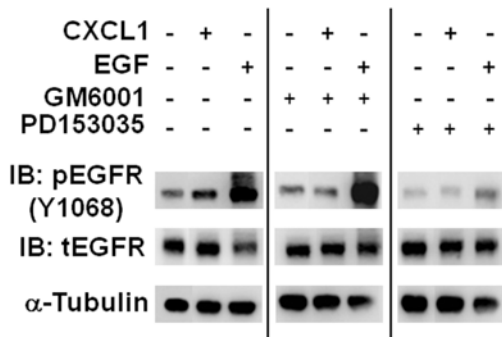


**A.**



**Supplementary Figure 3 (A)** Immunoblot for EGFR (pEGFR (Y1068), tEGFR) of SKOV3 cells pre-treated without or with either GM6001 (200 nM) or PD153035 (100 nM) and treated with CXCL1 (100 ng/ml) for 120 minutes.  $\beta$ -tubulin served as a loading control. (B) Graph represents pooled data from three independent experiments, with data calculated as pEGFR/tEGFR ratios and expressed as fold change relative to untreated controls  $\pm$  SEM.

Solid bars indicate cells that have not undergone any pre-treatment with an inhibitor, open bars represent cells pre-treated with GM6001 and bars shaded grey indicate cells pre-treated with PD153035, all treated with CXCL1 for 120 minutes. Inhibition of MMP activity with GM6001 decreased CXCL1-induced EGFR phosphorylation with no effect on EGF treated cells. Inhibition of the EGFR with PD153035 reduced basal and CXCL1-induced EGFR phosphorylation and also reduced EGFR phosphorylation in EGF treated cells, \*  $p < 0.01$ .

**B.**

