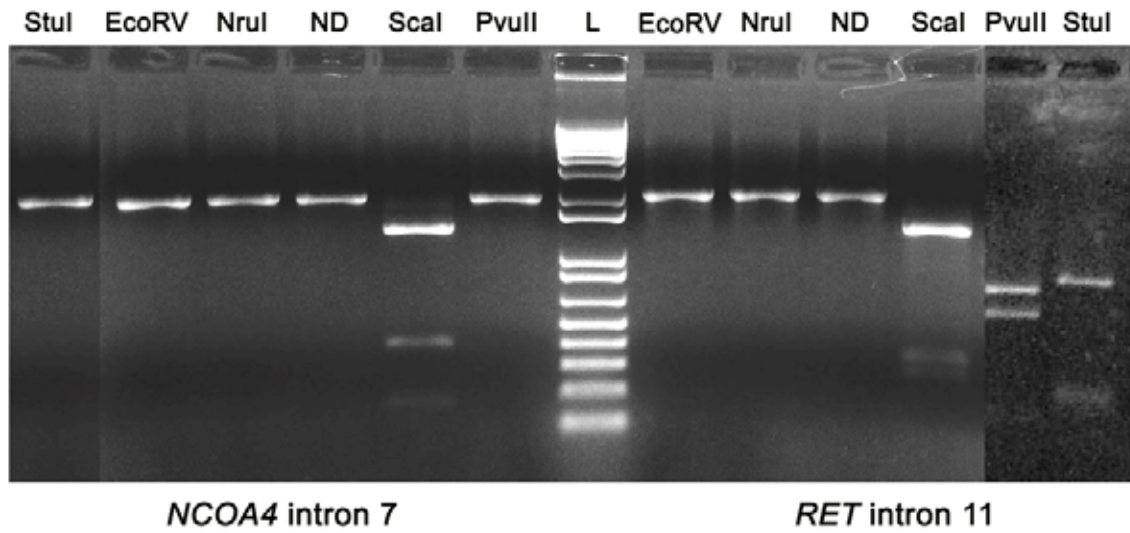


**Supplementary Figure 1** (A,B) Representative FISH images of normal thyroid cell (A), and HTori-3 cell (B) hybridized with RET (red), NCOA4 (orange) and CCDC6 (green) probes. (C) Normal thyroid cells (NTC) and HTori-3 cells have similar distances between RET and NCOA4 and RET and CCDC6 probes.



**Supplementary Figure 2** Electropherogram of PCR-amplified *NCOA4* and *RET* intronic sequences digested with specific restriction enzymes. It shows that all enzymes cleaved the respective DNA sequences as predicted based on their restriction maps.