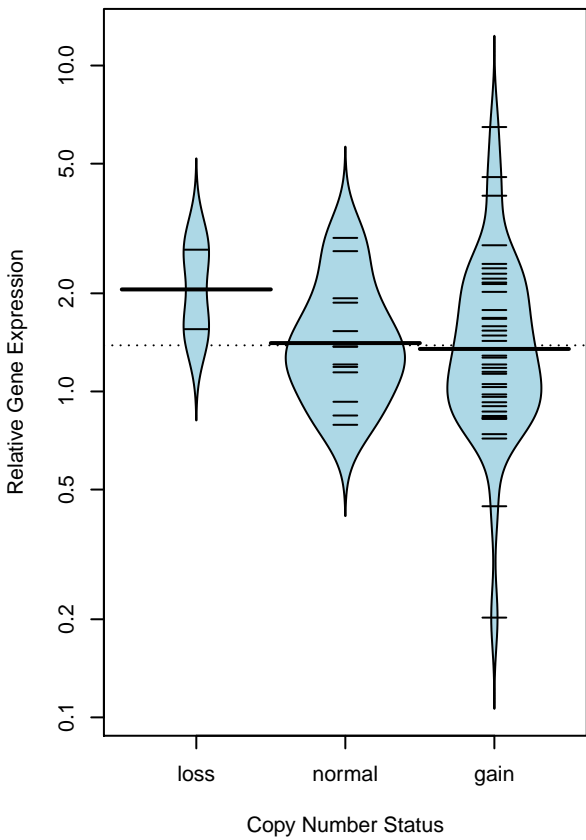
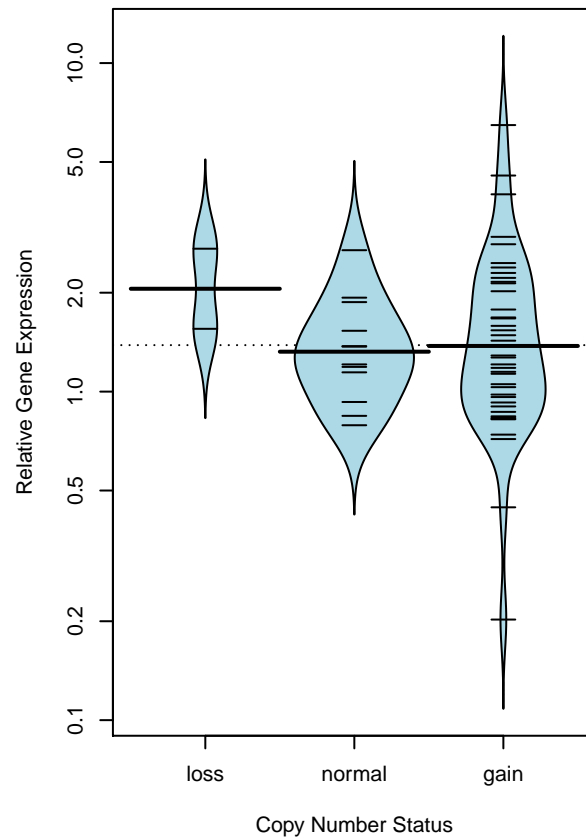
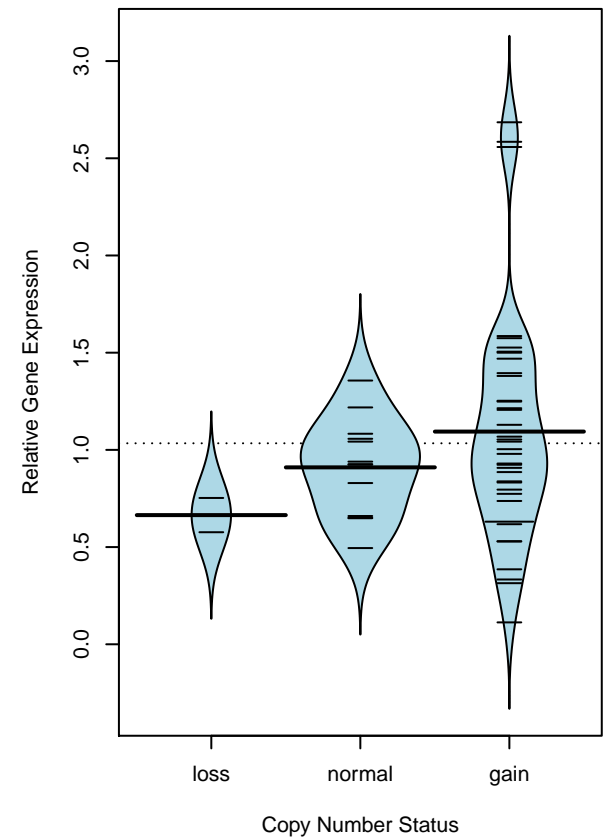
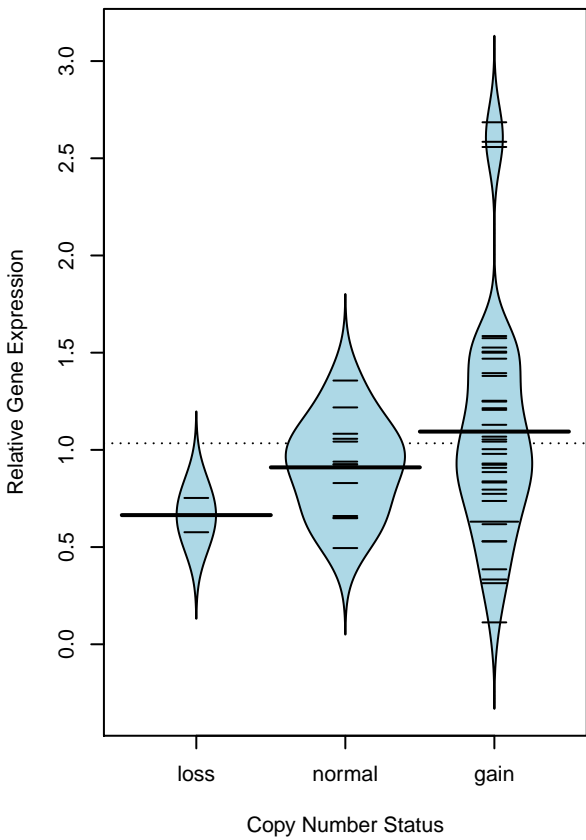
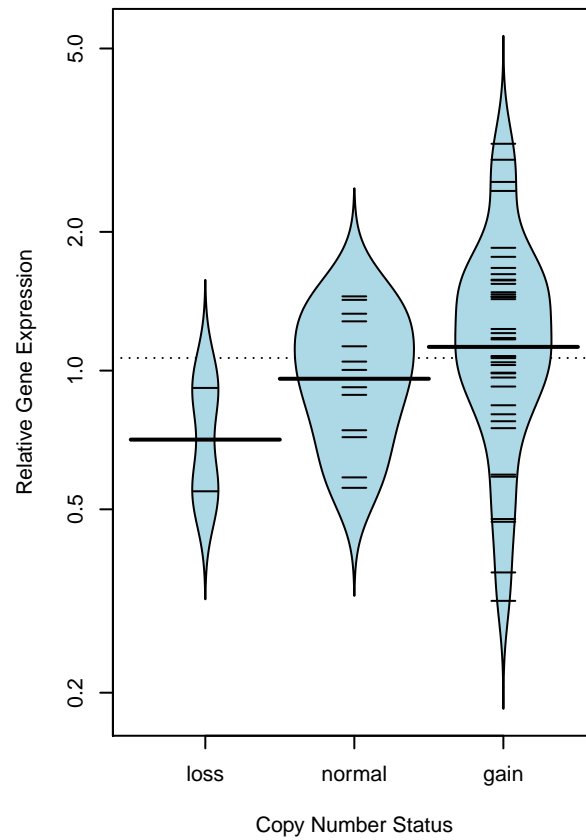
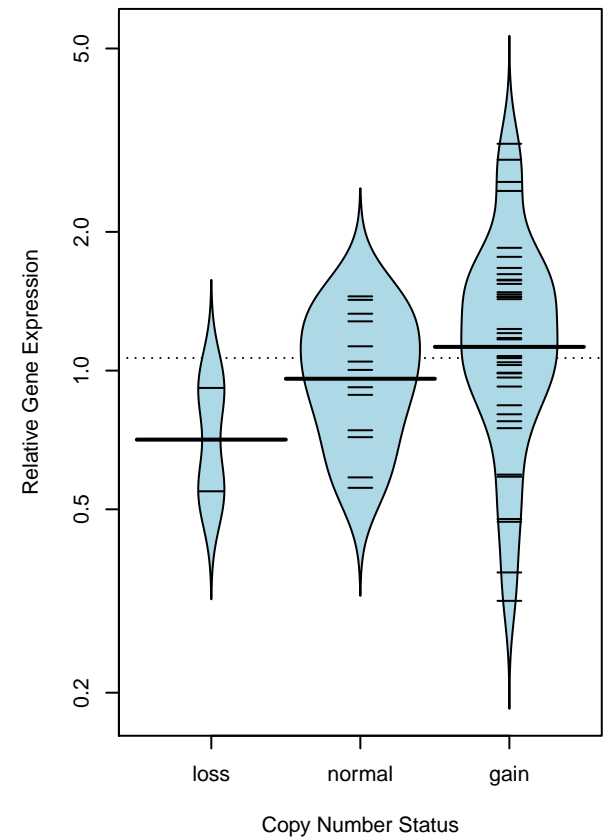
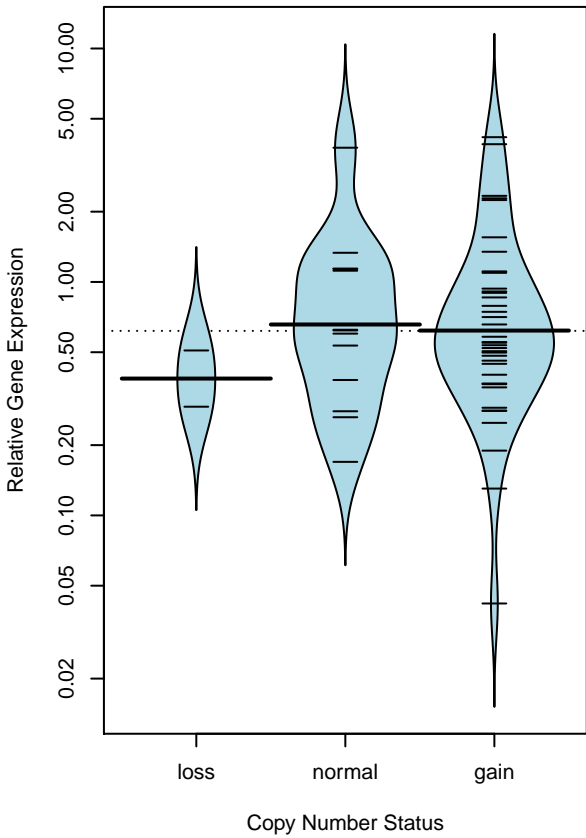
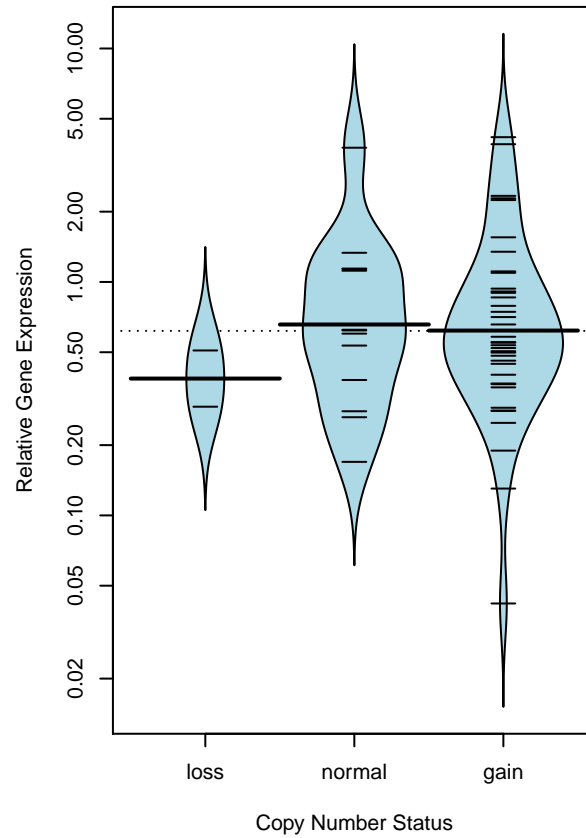


**TP73 RP1-37J18 | p-val: 0.424****TP73 RP4-785P20 | p-val: 0.428****SRM RP4-539L13 | p-val: 0.265****SRM RP4-575L21 | p-val: 0.265****TAF12 RP4-669K10 | p-val: 0.115****TAF12 RP4-669K10 | p-val: 0.115**

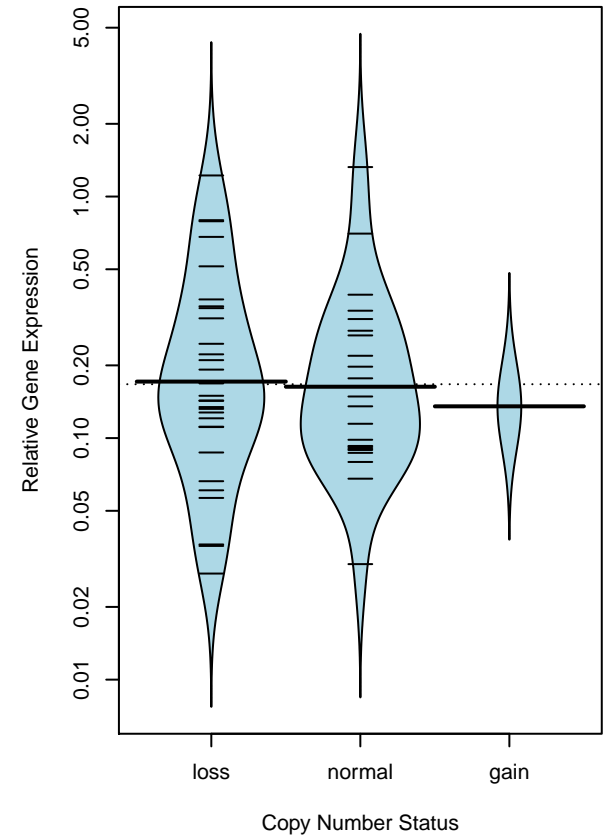
**YTHDF2 RP3-437I16 | p-val: 0.58**



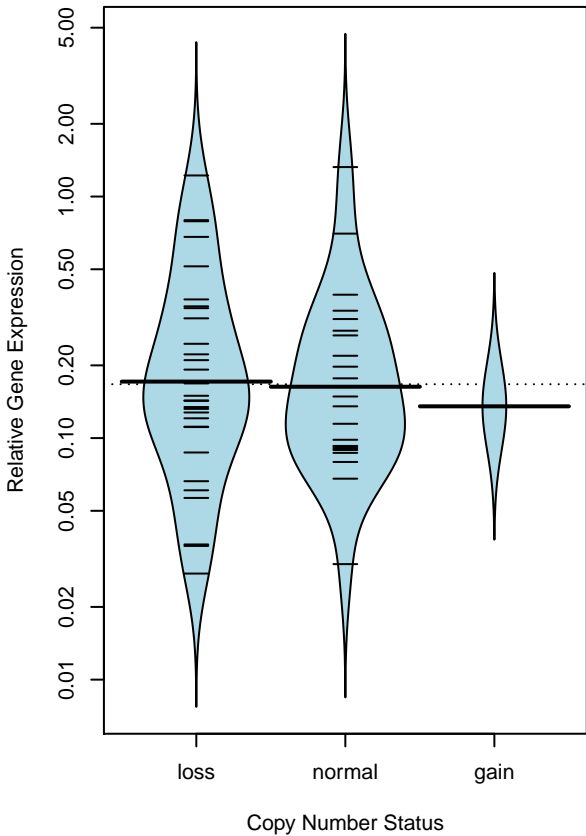
**YTHDF2 RP4-669K10 | p-val: 0.58**



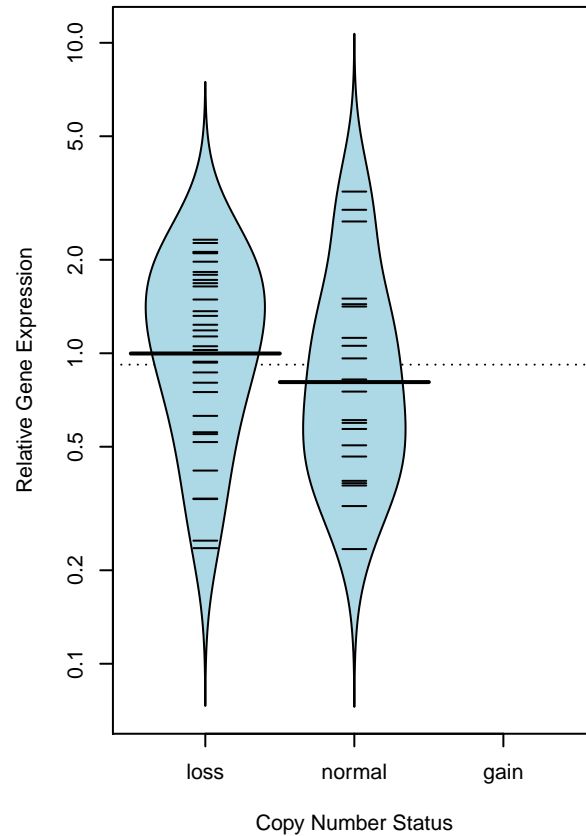
**SLITRK5 RP11-478H12 | p-val: 0.937**



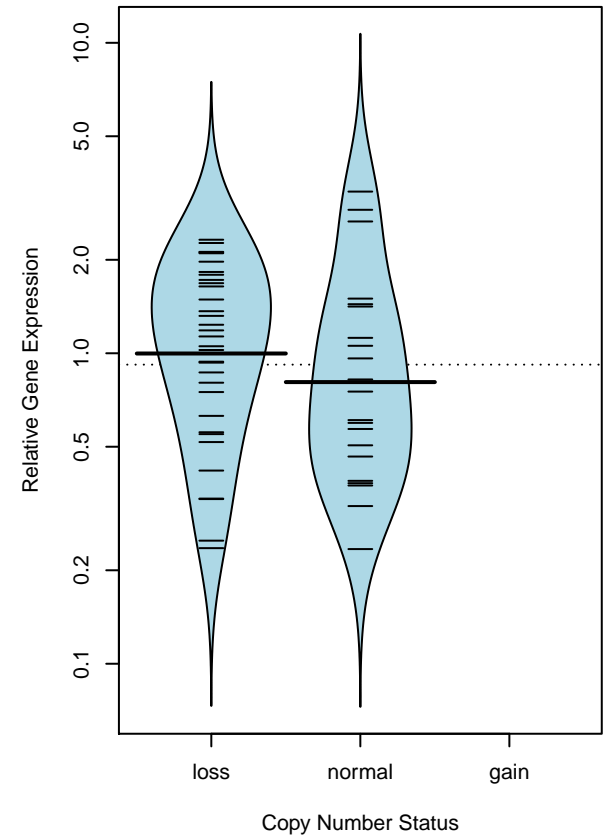
**SLITRK5 RP11-365J7 | p-val: 0.937**



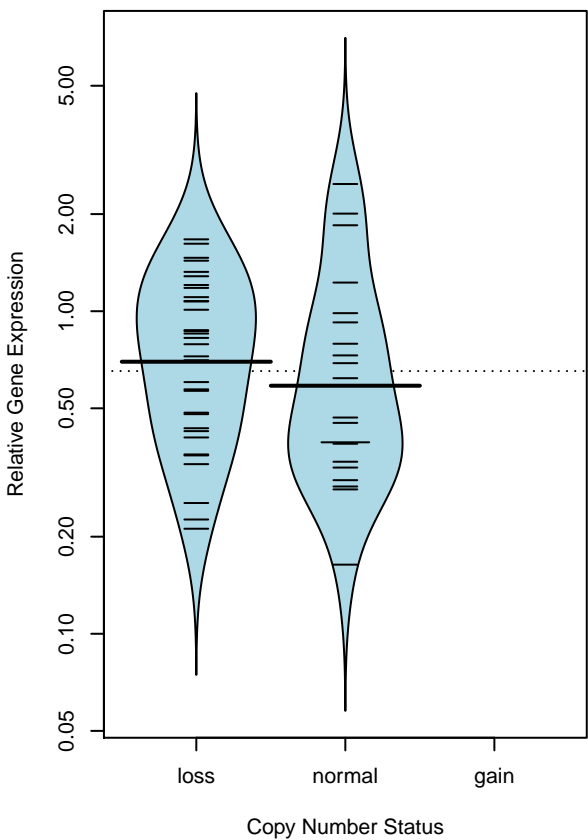
**PDLIM5 RP11-10L11 | p-val: 0.23**



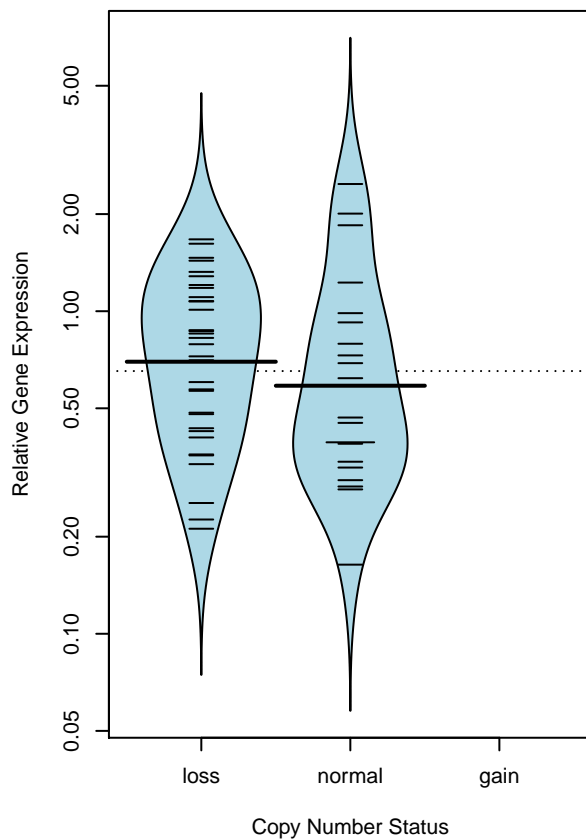
**PDLIM5 RP11-73I6 | p-val: 0.23**



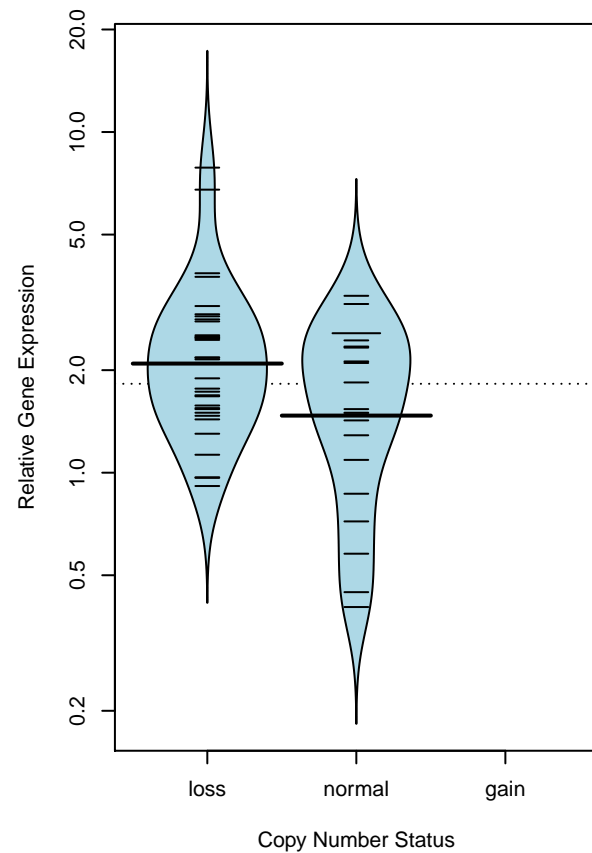
**BMPR1B RP11-10L11 | p-val: 0.249**



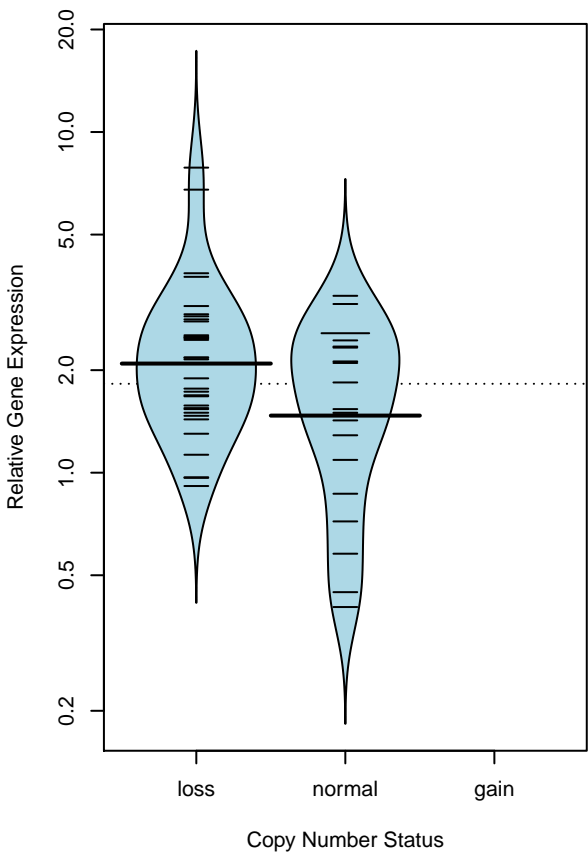
**BMPR1B RP11-7316 | p-val: 0.249**



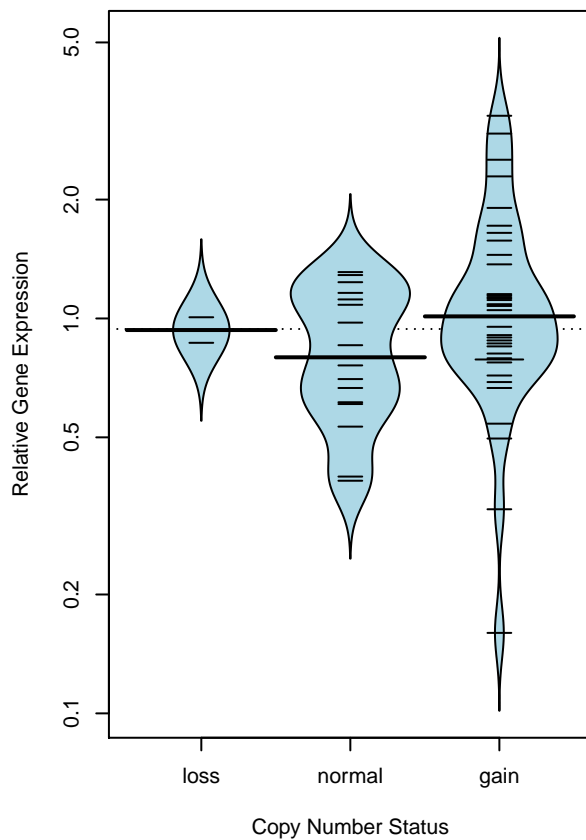
**UNC5C RP11-10L11 | p-val: 0.073**



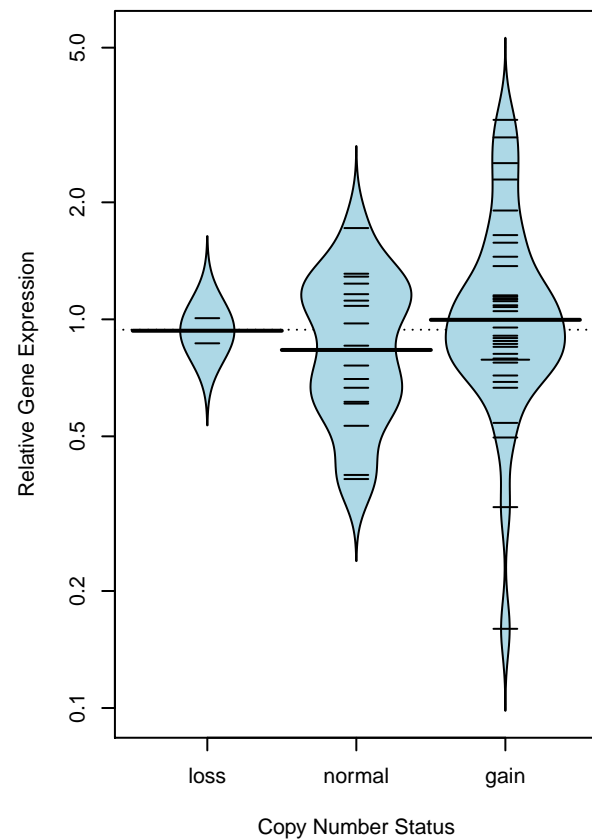
**UNC5C RP11-10L11 | p-val: 0.073**



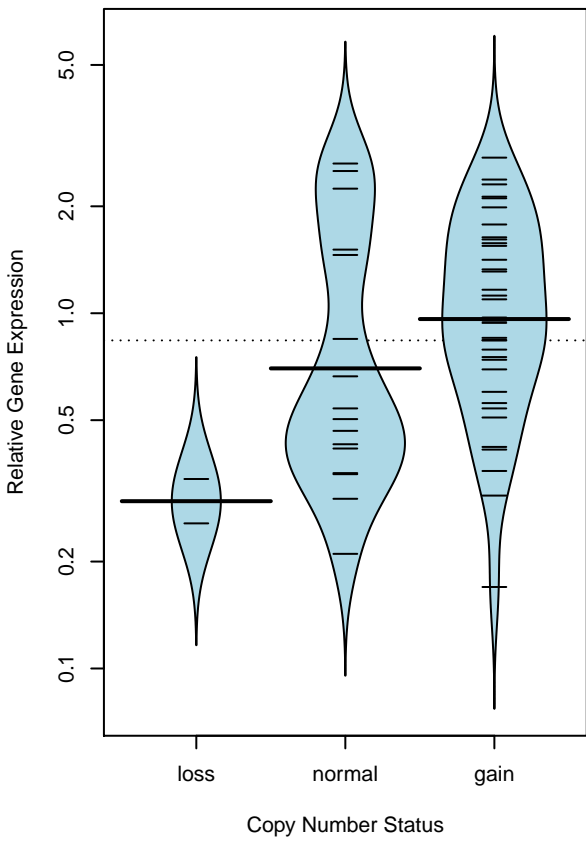
**PTMA RP11-52C8 | p-val: 0.295**



**PTMA RP11-419H23 | p-val: 0.525**



PDE6D RP11-52C8 | p-val: 0.033



PDE6D RP11-419H23 | p-val: 0.064

