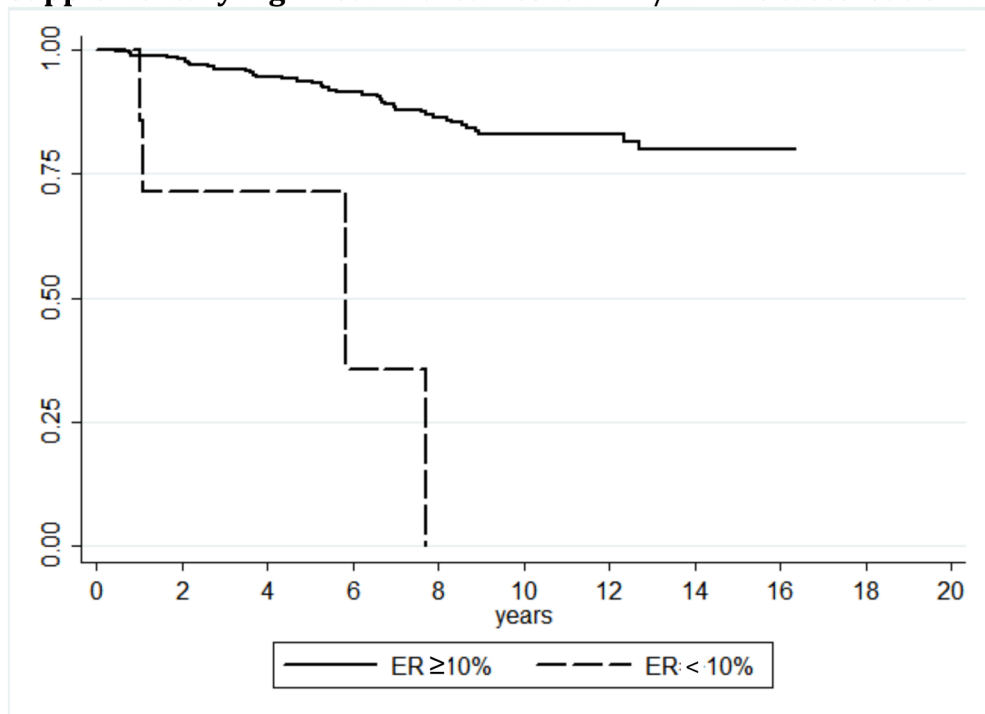
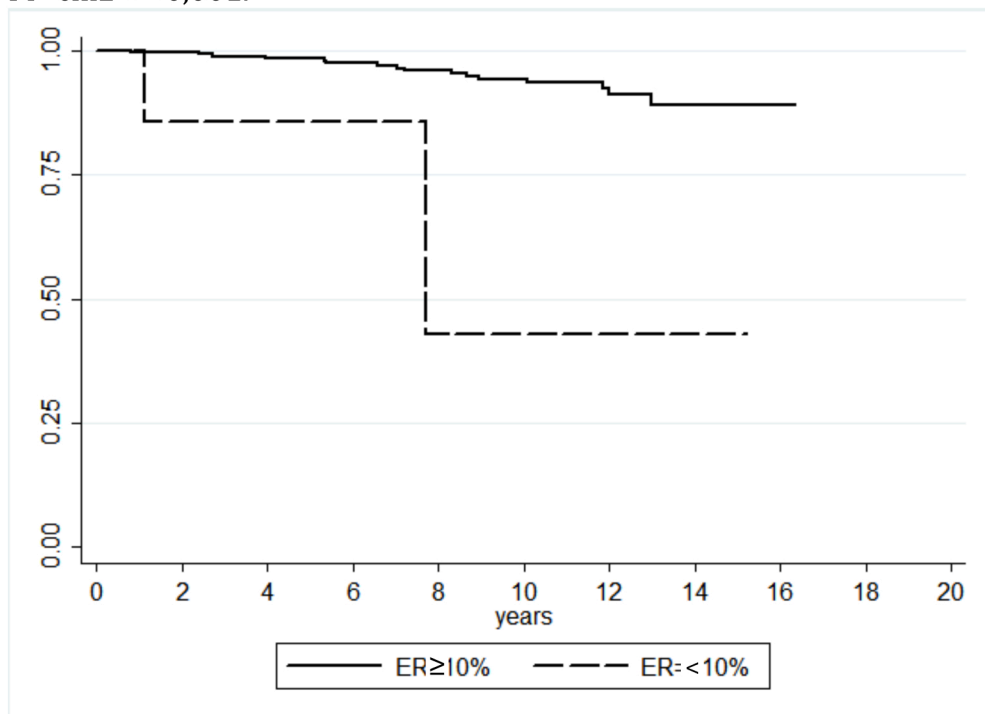


Supplementary Fig. 4. Survival curves for ER+/AR+ BC cases. Cut-off ER at 10%.



a) Disease Free Interval (DFI). Log-rank test for equality of survivor functions. $Pr > \chi^2 = < 0,001$.



b) Disease Specific Survival (DSS). Log-rank test for equality of survivor functions. $Pr > \chi^2 = < 0,002$.