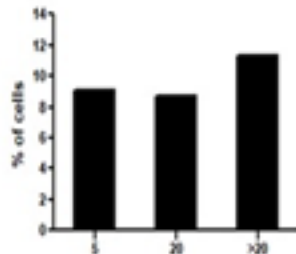
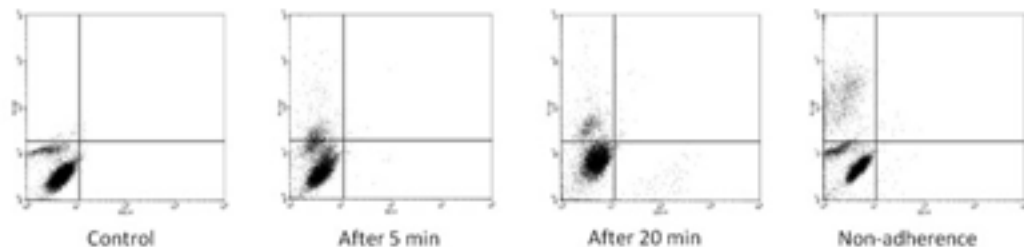


## CD44 Expression in LNCaP-CTRΔESS Cells



|              | CD44   |
|--------------|--------|
| Control      | 0.37%  |
| 5'           | 9.12%  |
| 20'          | 8.71%  |
| Non-adherent | 11.37% |

|                   | Low Left | Upper Left |
|-------------------|----------|------------|
| Control           | 9952     | 37         |
| After 5 minutes   | 8987     | 912        |
| After 20' minutes | 8965     | 871        |
| Non-adherent      | 8789     | 1137       |